

GSM/VoWLAN Dual-Mode Phone

User Manual



Your new Whipi-2300 dual-mode phone is a communication product based on Microsoft™ Windows Mobile 5.0® technology. To experience the optimum performance of your phone, please read this user manual thoroughly.

Similar to the operation of computer equipment, the Whipi-2300 will perform best when enough memory is present to run all programs. Running multiple programs at the same time may affect the response time of the device. If the device starts to react slowly, try rebooting the phone to return it to its optimum performance.

In the event that the contents of this manual are not consistent with menu options on the phone, please follow the prompts provided on the phone.

Some services described within this manual may not be supported by all networks. For clarification on services or functions accessible from this phone, please contact your network operator or service provider.

1 Side keys

Press **up/down** briefly to adjust volume, or mute a ringing tone.

On the **Home** screen, press and hold side **UP** to show **Quick list**. Press and hold Side **DOWN** to enter **Notes**.

2 LSK (Left) and RSK (Right)

Perform the function indicated by

3 Home key

Press to go back to the **Home** screen wherever you are. Or press and hold to lock the keypad.

4 Talk key

Press to dial number or receive a call.

Press to answer a second call while placing first caller on hold.

Switch between two active calls.

Press to perform hold function.

Press to enter **Call History**.

5 Slot for T-FLASH card

Insert T-FLASH card here.



6. Camera key

Press to activate **Camera** function.

7. Navigation/OK key

Press to enter menu/item or confirm action.

Move it upward or downward to scroll through names, phone numbers, menus, an settings. Also moves the cursor to highlight text while editing.

8. Back/Delete

Press to go back to the previous screen or delete an entry.

9. Power key

Press and hold to power the device on/off.

Press briefly to end or reject an incoming call or go back to the **Home** screen.

10. Number keys

Enter numbers and symbols.

11. Charger/USB Cable connector

Use the connector to synchronize data or recharge the battery.

1. Security precautions

To ensure effective and secure use of your device, please read the following precautions carefully before operation.

1.1 Exposure to Radio Frequency (RF) signals

Your wireless phone is a radio transmitter and receiver. It is designed and manufactured not to exceed the emission limits for exposure to radio frequency (RF) energy set by the Federal Communications Commission of the U.S. Government. These limits are part of comprehensive guidelines that establish permitted levels of RF energy for the general population.

1.2 Precautions while talking on your phone

Keep a minimum distance of 2.5cm from your phone to your body when in use. Install only accessories that are provided with your purchase or that are authorized by the manufacturer. Otherwise, the upper limit of radio frequency leakage prescribed may be exceeded.

1.3 Compatibility of radio frequency interference

Electronic devices without a well-designed shield or those whose radio compatibility has not yet been configured may experience interference caused by your phone.

1.4 In public

Some public places, such as hospitals, health resorts, or other medical facilities, post signage prohibiting cell phone usage. Heed such warnings and power off your phone in designated public places.

1.5 Safety in aircraft

Federal aviation regulations stipulate that cell phone usage is not allowed on board aircraft or during flights. Using cellular equipment on board an airplane can cause interference to aircraft navigation systems and/or networks. Follow all in-air flight instructions for powering off cellular and other electronic devices while on board aircraft. It is against the law of most countries to use cellular equipment while on board an airplane.

1.6 Pacemakers

The Health Industry Manufacturers Association recommends that a minimum separation of six inches be maintained between a handheld wireless phone and a pacemaker to avoid potential interference with the pacemaker. These recommendations are consistent with the independent research by and recommendations of Wireless Technology Research.

Persons with pacemakers:

- Should always keep the phone more than six inches from their pacemaker when the phone is turned ON.
- Should not carry the phone in a breast pocket.
- Should use the ear opposite the pacemaker to minimize the potential for interference. If you have any reason to suspect that interference is taking place, turn your phone OFF immediately.

1.7 Hearing aids

Some digital wireless phones may interfere with some hearing aids. In the event of such interference, you may want to consult your service provider, or call the customer service line to discuss alternatives.

1.8 Other medical devices

Other personal medical devices not specified in this user manual may experience external RF energy interference if not adequately shielded. Consult the manufacturer of your medical device to obtain the proper information regarding external RF energy. Turn your phone OFF in health care facilities where regulations are posted in designated areas. Hospitals or health care facilities may use equipment sensitive to external RF energy.

1.9 Road safety

When using any cellular device while operating vehicles or heavy machinery, caution is advised. Hands-free devices are recommended. In some states or countries, using cellular devices while operating a vehicle is against the law.

1.10 Explosive environment

When in any area with a potentially explosive environment, or where flammable materials are present, cellular devices should be turned off and the user should obey all signs and instructions. Electrical sparks in such areas may cause fire or an explosion, resulting in bodily injury or even death. Users are advised not to use the equipment at refueling areas, such as service or gas stations. Users are reminded of the need to observe restrictions on the use of radio equipment in fuel depots, chemical plants, or where blasting operations are in progress. Areas with a potentially explosive environment are often, but not always, clearly marked. These include fueling areas, below deck on boats, fuel or chemical transfer or storage facilities, and areas where the air contains chemicals or particles, such as grain, dust, or metal powders.

1.11 Batteries

Any contact of the battery's exposed electrodes with a conductor, such as jewelry or keys, may cause damage to possessions or bodily injury.

1.12 Electromagnetic radiation

Your phone fully complies with the standards related to wireless irradiation enacted by the authority of the State and International Health Association. These limitations are part of the comprehensive regulations and constitute public wireless irradiation permission standards. These standards are developed and formed after long-term intensive scientific research by independent scientific organizations such as ICNIRP (International Commission on Non-Ionizing Radiation Protection). These standards contain a large surplus to ensure the safety of all and take the variable factors of various measurement conditions in consideration.

1.13 Other precautions

The phone is comprised of precise electronic circuits, magnets and a battery system. Caution is advised when handling the components, particularly with regard to the following:

- Keep the phone and its accessories away from liquid or humidity.
- Keep the phone away from extreme temperatures.
- Keep metal objects (i.e., coins or key coils) away from the phone to avoid short circuits.
- The vibration function of the phone may move the phone, so do not put the phone near a flame or a lit cigar or cigarette.
- Avoid dropping or severe knocking of the phone to prevent damage.
- Keep the device away from computer disks, credit cards, traveling cards, or other magnetic objects, otherwise the message stored in the magnetic disk or credit card may be affected.
- Do not place you phone or battery in an environment exceeding 60°C, for example, on an automobile dashboard, window, or behind a glass plate penetrated by the sunshine.
- Do not remove the battery while the phone is in the power on state or booting up state.
- Do not discard the battery in fire.
- Do not place the phone battery in the mouth. Swallowed electrolytes may be poisonous. Should ingestion occur, contact a physician or emergency medical facility immediately.
- Do not attempt to disassemble the phone or other accessories.
- The built-in battery must only be changed by a professional service engineer. If it is displaced with a battery error, an explosion may occur. Be sure to handle the used battery according to manufacturer's instructions.
- Usage of batteries or chargers not designed by the manufacturer may pose a potential risk. Manufacturer's accessories are recommended and available for your device.
- Heat is generated by prolonged usage of the headphones and by prolonged charging of the cellular device.

-
- A moist or anti-static cloth may be used to wipe or clean the phone. Do not use a dry cloth that attracts static electricity to avoid damage to the phone. Do not use a chemical reagent or a cleanser containing abrasives to avoid damage to the phone's casing.
 - Please do not keep the state of having no battery in the battery compartment or outage; otherwise, some data may be initialized.
 - The metal material contained in the phone may cause you in hyper susceptibility, which depends on your physique or health status.
 - Since that parts such as liquid crystal display and pick-up head belong to fragile parts, please carefully keep them such that the phone may not be impacted or squeezed.
 - Do not engage the camera's flash component directly in the line of sight. A safe distance should be maintained.

2. Overview of your phone

In this section, you will learn how to install the battery, the SIM card, the T-FLASH card, and how to charge the battery.

2.1 Installing the SIM card

The SIM (Subscriber Identification Module) card contains a computer chip that stores your personal number, phone book, and other services provided by your cellular service provider.

To insert a SIM card:

1. Press on the battery release latch and slide the battery cover downward to open.
2. Remove the battery by lifting it up from both sides of the bottom edge.
3. Lift up the SIM metal socket.
4. Insert the SIM card with the gold-plated contact area on the card facing down. Push the metal socket down to lock into place.

2.1.2 PIN and PUK code

PIN code: A Personal Identification Number (PIN) is provided with the purchases of your SIM card. You can prevent other people from using your SIM card without your permission by using the PIN protection function included with the phone. However, once you have enabled the PIN protection function, you will need to enter your PIN each time you turn on your phone. Entering the wrong PIN three times will lock your SIM card automatically. No one will be able to view data or access functions on the SIM card.

PUK code: When the SIM card is locked, only the device's PUK (PIN Unblocking Key) code can unlock it. If you enter an incorrect PUK code ten times consecutively, the SIM card will be locked permanently. Usually, the PUK code is accompanied by the SIM card at time of purchase. If you have lost your PUK code or the PUK code was not provided with the SIM card at time of purchase, contact your network service provider.

2.2 Installing the T-FLASH card

Use only the T-FLASH (Secure Digital) card in your Smart phone. You can install the T-FLASH Card to store images, video clips, music, and other data on your phone.

To insert a T-FLASH card:

1. Follow the instructions provided in Section 2.1 for removing the back cover and battery.
2. Slide the T-FLASH card into the holder, with the gold-plated contact area facing down.

3. Push the card down and slide the metal latch over the T-FLASH card to secure it into place.

2.3 Battery information

2.3.1 Installing the Battery

1. Insert the battery by aligning the exposed copper part of the battery pack with the protruding copper conductor, and then gently push the bottom of the battery into place.
2. Slide the cover on the phone.

2.3.2 Charging the Battery

When the battery is drained below normal working value, the screen displays an empty battery icon and sound an alert. Charge the battery immediately upon notice to avoid losing data saved to the phone. If proper action is not taken to recharge the battery, the phone will automatically shutdown after the battery life is depleted.

The phone contains a rechargeable lithium battery. The phone is designed to use only manufacturer-specified original chargers and batteries, to ensure the longevity of the phone.

- Insert the charger plug into the USB charger port carefully.
- When charging in the power off status of the phone, connect the USB charger to the external power source, and the battery icon in the phone screen will begin flickering. If charging in the switch-on status of the phone, the display screen will show a notice of "charging now". The phone can still be used while charging.
- Before the device's first use, charge the battery by using the accessory charger for a full 8-10 hours. Charging fully will ensure that the battery reaches its best performance after two or three times of full charge and discharge cycles.
- When the battery is fully charged, the battery indicator icon will stop flickering. If the phone is powered off, the display will show "charging is completed!"
- Disconnect the connections between the charger and the phone when charging has completed.

⚠Note: The accessory USB data cable has the charging function too in connecting the phone and the computer. However, because the voltage provided by the USB port of the computer cannot meet the charging requirements of the phone completely, using USB data cable to charge the battery will affect the longevity of the battery. We advise you to charge the battery by using the battery charger.

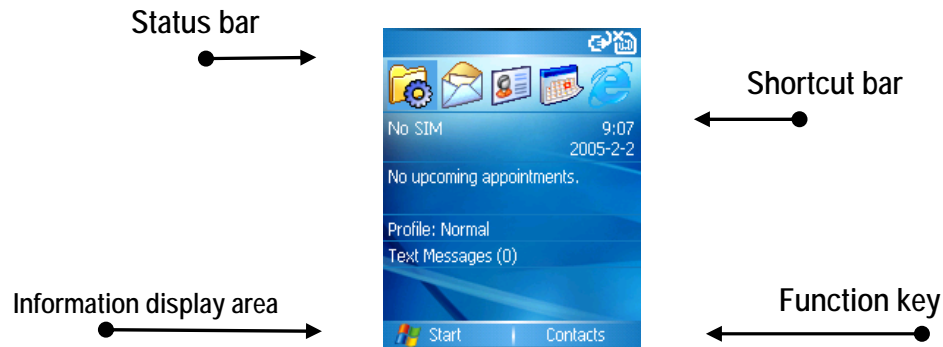
2.4 Power on/off

Press the Power key for several seconds to power on/off your phone. When no SIM card is installed, a prompt will appear on the display.

Note: When the phone has been powered on for the first time, you will be prompted to setup basic information for the phone, i.e., time zone, date, time, power up password, E-Mail account, etc.

2.5 The Home screen

Power on your phone and wait until it fully boots. This displays the Home screen as illustrated below.



Note: Icons illustrated in this User's Manual are for explanatory purposes only. Some icons introduced here may not be the same as those presented in your phone due to firmware upgrades. Follow the prompts and icons provided with your cellular device.

2.5.1 Indicator bar

In the Status bar, the device displays the status of various indicators, including battery life, signal strength, GPRS and many others. The following table provides a brief description of icons that can be displayed in the Status bar.

Icon	Meaning	Icon	Meaning
	New E-mail or text message (SMS)		Radio off
	New voice call		Missing SIM
	New instant message		Faulty SIM
	Voice call		Sync error
	Voice call in progress		Roaming
	Ringer off		Wi-Fi on
	Data call in progress		Wi-Fi connected
	Call forwarded		Wi-Fi data call
	Call on hold		GPRS available
	Missed call		GPRS connected
	Battery level		Numeric
	Low battery alert		Signal strength
	No battery, or faulty battery		Radio connected, or no signal
	Battery charging/Data cable connected		

2.5.2 Shortcut bar

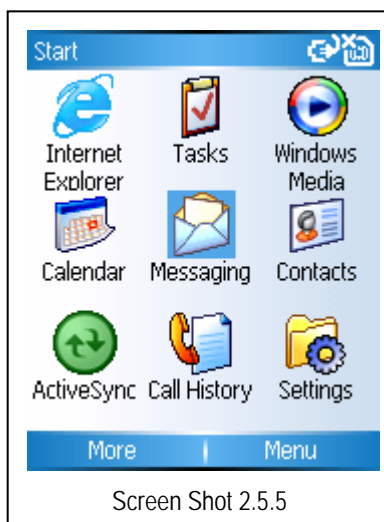
In the Shortcut bar, there are five shortcut keys representing their respective functions for navigating available programs within the device.

2.5.3 Information display area

In the Information display area, relative information is displayed, including name of your Internet service provider, current date/time, recent appointments and reminders, scene mode status and new message prompt.

2.5.4 Soft key bar

The command at soft key bar is in accordance with current menu function, which can be performed by **LSK** and **RSK**.

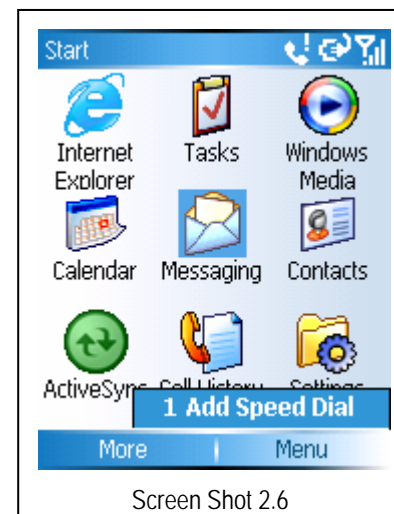


2.5.5 Start menu

The **Start** menu is a function key located in the in left bottom corner of the screen. Press the **LSK** to open Menu options. All program functions are listed on the Start menu.

2.6 To Add Speed Dial

On the **Start** menu, press the **RSK** to select **Add speed dial** from **Menu**.



You can add a maximum of 99 speed dial entries using numeric key combinations.

2.7 Lock and Unlock

While the phone is on, press and hold the Power button to lock the keypad. Press **LSK** then * key to unlock it.

3. Basic functions

3.1 Making a Call

The phone provides a variety of methods to place a call for your convenience.

3.1.1 Making a call from the Home screen

When the **Home** screen is displayed, press the numbers you wish to dial on the keypad, then press the **Talk** key to make the call. Press the **Back** button if you need to backspace over a digit to correct the number to be dialed. As you enter a phone number, your phone searches **Contacts**, **Call History**, **Speed Dial** lists, and your SIM card to find a matching number. Matching names and numbers will be displayed. When you see the name of the person you want to call (or the entire number) displayed, select it, and press the **Talk** key.

3.1.2 Making a call from Contacts

To make a call by Contact name: From the **Home** screen, press the **RSK** ("Contacts") or select **Contacts** from the **Start** menu. If there are numerous contacts listed, you can enter the first few letters of the desired contact's name to perform a search. Select the name you want to call and press the **Talk** key. The phone number that has been specified as the default phone number for that contact will be dialed.

To change the default number for a Contact: From the **Home** screen, press the **RSK** ("Contacts") or select **Contacts** from the **Start** menu. Select the contact whose default phone number you want to change, and then press the Right or Left navigational button to change the default number. The abbreviation at the right side of the list indicates the default number. For example, if you change "w" to "m", the default number changes from Work phone (w) to Mobile phone (m).

To make a call from an open Contact card: From the Home screen, press the **RSK** ("Contacts") or select **Contacts** from the **Start** menu. Select the desired contact, and then press the **Action** button to display all the information for that contact. Select the number you want to call, then press the **Talk** key.

For more information about **Contact** list abbreviations and **Contact** cards, please see **Chapter 8**.

3.1.3 Making a call using a recently dialed number

From the **Home** screen, press the **Talk** key to display a list of recently dialed names/numbers. Select the item you want to dial, and then press the **Talk** key again.

3.1.4 Making a call from the Call History list

Select **Call History** from the **Start** menu. Select the number or name you want to call, and then press the **Talk** key.

3.1.5 Making a call from a hyperlink

When you see an underlined phone number presented as a hyperlink in an E-mail message, just scroll to it, and press the **Action** button to make the call.

3.1.6 Making emergency calls

Calls to emergency service numbers can be made under any circumstances, even if you have locked the SIM card and/or your phone. To place an emergency call, dial the emergency number appropriate for your location, and press the **Talk** key.

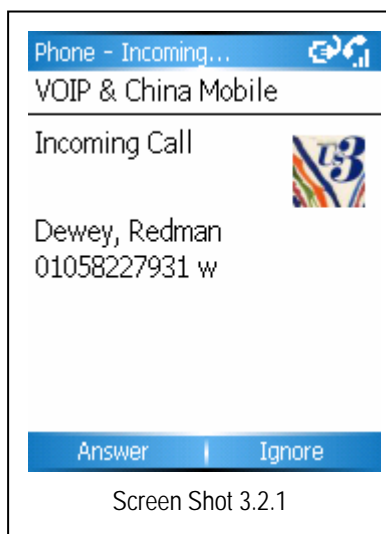
3.2 Receiving a call

3.2.1 Receiving a call

When your phone receives an incoming call, the name and number of the caller are displayed on the screen. If the name of the caller is not in your **Contacts** list, only the caller's phone number is displayed.

You can answer a call by pressing the **Talk** key or the **LSK** ("Answer").

To ignore the call, press the **RSK** ("Ignore"). Note that selecting **Ignore** will connect the caller to your voice mailbox, if you subscribe to this service.



This is the default behavior for incoming calls. See the next section if you want a Photo ID (which you have associated with the caller) to be displayed on your screen during incoming calls.

When an incoming call is detected (see screen shot below), you can press **Send** or **LSK** to answer it, or press **RSK** to **Ignore** it.

With headphones engaged and enabled in **Profiles**, the device will auto-receive an incoming call after a brief pause.

Note: If any key answer is enabled in **Settings>Phone>Dial up settings**, you can answer an incoming call by pressing any key in addition to the **Send** key.

3.2.2 Answering a second call using Call Waiting

While a call is in progress, another incoming call causes the **Call Waiting** screen to appear. Press the **LSK** (“Answer”) or the **Talk** key to simultaneously place the first call on hold and answer the second call. To end the first call before answering the incoming call, press the **End** button, and then press the **Answer** soft key or the **Talk** key to **Answer** the incoming call.

3.2.3 Ignoring a Call on call waiting screen

While a call is in progress, another incoming call causes the **Call Waiting** screen to appear. To **Ignore** the incoming call, press the **RSK** (“Ignore”). This will keep your current call in progress, but will connect the “call waiting” caller to your voice mailbox, if you subscribe to this service.

3.3 Functions during a call

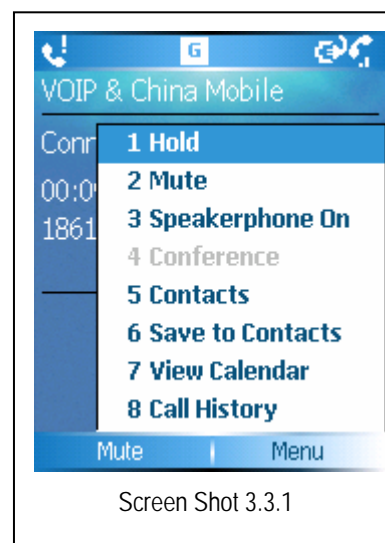
During a call, you can execute other operations by selecting **Menu**.

Note: Selected functions on the **Menu** can only be utilized if provided or if available from your network service provider.

3.3.1 Holding a call

During a call, select **Hold** from the **Menu** to prevent callers from hearing each other's conversations.

During a call, you can enter another number to be dialed. In this case, the first call will be automatically placed on hold (see the screen shot below). After the second caller is connected, press the **LSK** to switch between the two calls. Only the active call can hear your side of the conversation.



3.3.2 Mute

To **Mute** the speaker phone so that the caller does not hear a conversation on your side of the line, select **Mute** from the **Menu**. To resume the call, press **Mute** again from the **Menu**. When the speaker is muted, only you can hear the voice from the caller. Your voice is not heard by the caller.

3.3.3 Speakerphone On

Turn on the speaker then it will help lift the voice from this side for you to listen clearly within noisy surroundings.

3.3.4 Conference call

Conference call, or three-way calling, is supported with your cellular phone. Please refer to [Section 3.4.2 Holding a Conference Call](#) for details.

3.3.5 Contacts

During a call (or a conference call), select [Contacts](#) from the [Menu](#) to view details of the contact list. You may also perform other functions with the contact list from the [Menu](#).

3.3.6 Viewing Calendar

Viewing the [Calendar](#) also allows you to schedule appointments or set reminders.

3.3.7 Call History

[Call History](#) allows you to view a list of [Received Calls](#), [Missed Calls](#) or [Dialed Calls](#). You can also place calls from each of these lists or delete entries.

3.4 Dealing with multiple calls

While a call is in progress, the device will prompt you that another incoming call is present. Should you choose to answer the call, you will be able to switch between both calls or you can join both calls into one conversation. You can also add a third call with the original two for a three-party conference call where all parties can participate in the discussion. A conference call with your cellular device consists of a maximum of six individual calls.

Conference call features are dependent on availability from your network service provider and enabling the settings within your device.

3.4.1 Switching a call

Should you receive a second incoming call while a call is in progress, you can press the [LSK](#) to receive the second caller, which places the initial caller on hold. The initial caller will not be able to hear the second caller's conversation. Select [Switch](#) to return to the initial call and place the second call on hold. The second caller will be unable to hear the initial caller's conversation. You also have the option to [Hang Up](#) both callers.

3.4.2 Holding a conference call

This feature allows you to connect up to six callers in addition to yourself for a 7-way conversation.

3.4.3 Steps for holding a call conference

While one call is activated, connect or answer a second call.

Once connected, select **Conference** from the **Menu**. This will place the original caller on hold and form a conference call for each initiated new call, up to a maximum of six callers plus yourself.



Screen Shot 3.4.3



Screen Shot 3.4.2

While a conference call is active, you may need to speak with only one caller in the group. Select **Split** from the **Menu** (see screen shot below). **Split** lists all members in the session. Select the caller to whom you wish to speak privately. The conference call will proceed, but the group will not hear the private conversation between you and the selected caller. To return to the group conference call, select **OK**.

Press the **Power** key to end the complete conference call.

3.5 Net Call

Your device supports **Voice over WLAN (VoWLAN)** calls.

By default, your device attempts emergency calls primarily over cellular networks. If an emergency call using cellular networks is not successful, then your device attempts an emergency call through your WLAN call provider. Due to the established nature of cellular telephony, you should use cellular networks for emergency calls wherever possible. The capability for an emergency call using Internet telephony depends on the availability of a WLAN network and your Internet call provider's implementation of emergency call capabilities. Contact your Internet provider to check Internet telephony emergency call capabilities.

VoIP (voice over Internet protocol) technology is a set of protocols that facilitate phone calls over an IP network, such as the Internet. VoIP phone calls can be established between computers, between mobile phones, and between a VoIP device and a traditional telephone. To make or receive a VoIP call, your device must be within WLAN coverage, for example.

Before you can make net calls, you need to create a connection profile and a SIP phone profile. When the profile is set, you can initiate a net call from all applications where a regular voice call can be placed.

To place a VoIP Call

- From the Home screen, press #, and then enter phone number.
- Press Talk to initiate the call.

Please see [Section 12.2 Wi-Fi](#) for instructions on how to set up a Wi-Fi connection, and how to create a SIP phone number.

Net call within call history

When you want to initiate a call through WLAN from the [Call History](#) menu, you must select the number first, and then click the [RSK](#) to select [WLAN Dial](#). If the number has a # prefix, you can click the [Green](#) key to initiate a Net call.

3.6 ActiveSync

3.6.1 Using ActiveSync

Your device supports synchronization with your PC via USB cable and Microsoft® ActiveSync®. When the cable is connected, ActiveSync automatically compares data on the PC and synchronizes with the phone.

3.6.2 Installing ActiveSync

Microsoft® ActiveSync® is pre-installed on your cellular device. The companion CD that came with the purchase of your cellular device can be used to install Microsoft® ActiveSync® on your PC.

3.6.3 Synchronizing data with PC

By default, [Contacts](#), [Schedule](#), and items in Microsoft Outlook® will be all copied to the cellular device. All information contained in the phone can be viewed on either the PC or the phone once synchronization has taken place.

4. Internet Explorer

4.1 Pocket Internet Explorer

Using Pocket Internet Explorer (IE), you can connect your smart phone to the Internet or applications based on network connections. Your smart phone supports connecting to Internet via a common data call, browsing the Internet with support of GPRS based on a GSM network, and connecting to high-speed WLAN (Wireless Local Area Network) access. Deploying any of these powerful functions keeps you connected to the whole world at any given time.

To connect your smart phone to a network with IE, you will need to:

- Make sure that your SIM card supports IE or contact your Internet service provider for confirmation.
- Order data operating services or GPRS services from your Internet service provider.
- Ensure proper setup of IE on your phone.

Note: WAP access depends on availability from your Internet service provider and proper settings enabled on your cellular device.

Please consult with your Internet service provider for detailed information.

4.2 Starting Internet Explorer

The first time Internet Explorer is launched, three helpful websites are presented as your Favorites. Select **Go** to browse any of these sites.

You can also select the **Address** bar from the **Menu** to enter a website address and browse. Press the **LSK** (**Go**) to connect to the website. While browsing websites, you can go back to any page by pressing **Back**. Press the **Power** key to disconnect from Internet and exit the browser.



4.3 Offline menu

When offline, you can select from following items on the [Menu](#):

Address Bar: Enter a website address you'd like to browse.

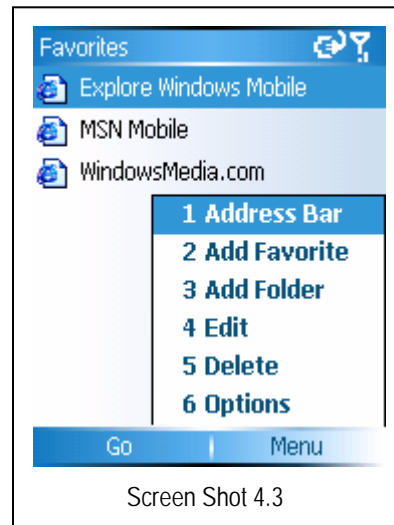
Add Favorite: Select [Add Favorite](#) from the [Menu](#) to save a web page link, including its name, address and the name of the folder where it will be saved.

Add Folder: Use the [Add Folder](#) feature to make it easy and convenient to manage miscellaneous websites stored on your phone.

Edit: Edit a website address.

Delete: Delete an item saved in your [Favorites](#) list.

Options: Using the [Options](#) feature you can set up the browser. Refer to [Section 4.4 Setting up Internet Explorer](#).



4.4 Online menu

When Internet Explorer is online, press the [RSK](#) to select the following items from the [Menu](#):

Address Bar: Enter a website address you'd like to browse.

Favorites: Save all your favorite websites in the [Favorites](#) list.

Add to Favorites: Select [Add to Favorites](#) from the [Menu](#) to save a web page link, including its name, address and the name of the folder where it will be saved.

Forward: Select [Forward](#) to proceed to the next page in recently visited websites.

Refresh: Reload the current web page.

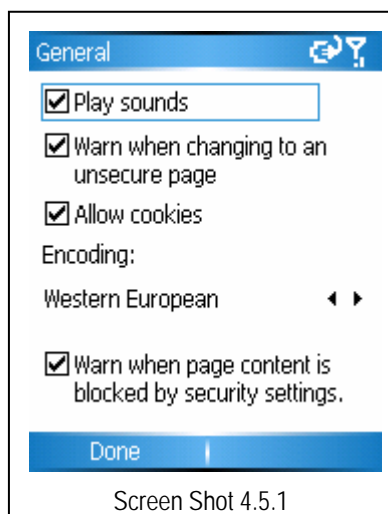
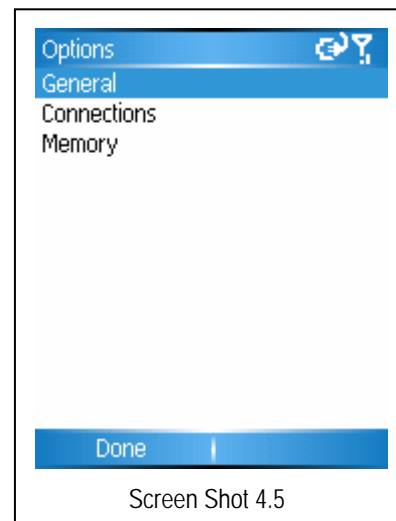


- History:** Recently visited pages are stored in [History](#). You can select a website to return visit from this list.
- View:** Select a view mode for browsing pages.
- Zoom:** Select a resolution for displaying web pages.
- Tools:** From the [Tools](#) menu (see the following screen shot), you can send a web address via the [Send Link via E-Mail](#) option. You can also view the [Properties](#) of the current page or select from various browser options. To setup the browser, please refer to [Section 4.4 Setting Up Internet Explorer](#).



4.5 Setting up Internet Explorer

Select [Functions](#) from the [Menu](#) in Internet Explorer to set up options for the browser.



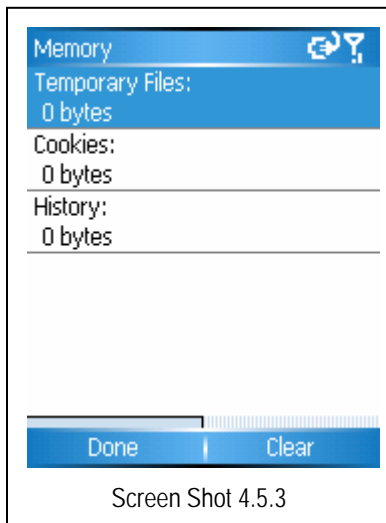
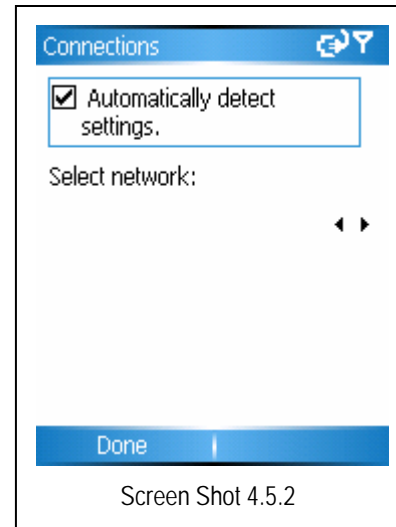
4.5.1 General

Select [Options](#) from the menu, and then select [General](#), [Connections](#) or [Memory](#) to explore settings for each respective option.

4.5.2 Connections

Select **Connections** from **Options** (see the screen shot below) to change the way the device connects to the Internet.

Using the auto-detect settings will automatically select the proper way of connecting according to the web site.



4.5.3 Memory

Select Memory from **Options** (see screen shot below) to view memory status of the network. Press the **RSK** to clean out **Temporary Files**, **Cookies**, and **History**.

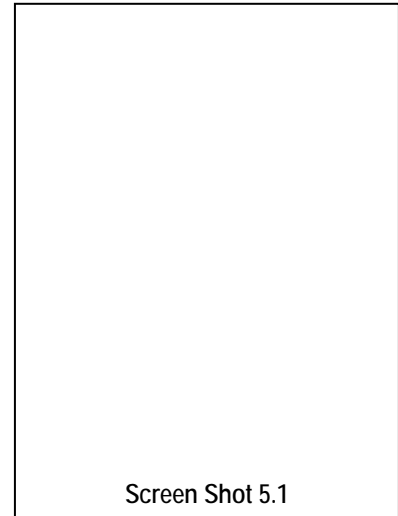
5. Tasks

Tasks recorded and assigned from the [Task](#) function in Microsoft Outlook® on your PC will be stored and updated via ActiveSync®.

5.1 Synchronizing Tasks on PC

To synchronize Microsoft Outlook's Task entries from your PC to your phone, launch ActiveSync®.

Connect the PC to your phone with the USB cable. In default mode, the system will automatically synchronize task detail to [Task](#).



Screen Shot 5.1

5.2 Creating a Task on your phone

Select [Task](#) from the main [Menu](#). Enter details for the task record and press [OK](#). Press the [LSK](#) to activate the task.

Note: To make changes to the schedule or a set priority, you must synchronize your phone with your PC and set them in Microsoft Outlook® on PC.

5.3 Menu at Tasks

When you have entered [Tasks](#), press the [RSK](#) to open the [Menu](#) for options (see the screen shot below) to perform additional functions, such as:

Beam Task: Send selected task to other storage devices by infrared transfer.

Delete Task: Delete the selected task.

Sort By: Sort tasks by several categories.

Filter: Filter tasks in various states.



Screen Shot 5.3

6. Windows Media

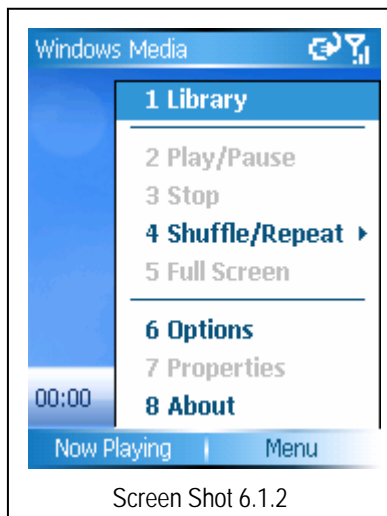
The built-in Windows Media Player® can play audio/video files stored on the phone or on a memory card.

6.1 Playing a file

Press the **LSK** to enter the main interface of the Windows Media Player, whose default interface is its library. Different types of files are placed in specified folders. Select the file you want to play. Press **Back** to enter the playing screen. To view the play list, click **Now Playing**.

6.1.1 Button operations

- Pause:** Press **OK** to pause the current file playing.
- Back to the beginning:** Press **<<** while playing a file.
- Jump to next file:** Press **>>** while playing a file.
- Adjusting volume:** Press volume **Up/Down** or Side keys to turn the volume up/down.



6.1.2 Menu at Player

Press the **RSK** to open the **Menu**.

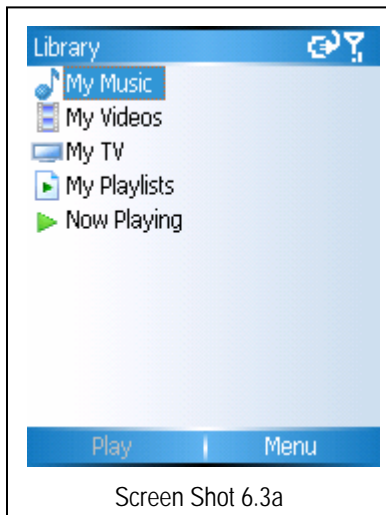
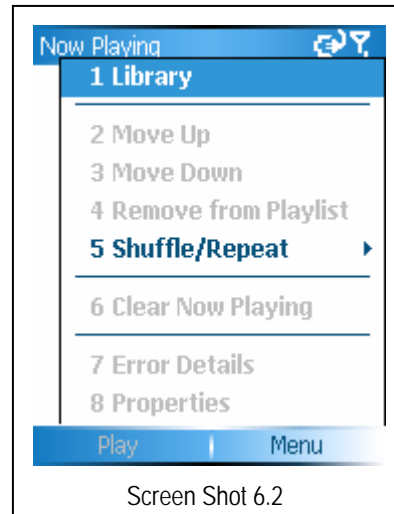
- Library:** All media files are stored in the Library.
- Play/Pause:** Play or pause current file.
- Stop:** Stop playing current file.
- Shuffle/Repeat:** Play files randomly or repeat playing a file in the current play list.
- Full screen:** Play video files in full screen mode.
- Options:** Media Player settings.
- Properties:** Show details of current file.
- About:** View version information.

6.2 Now Playing

Enter the **Now Playing** screen from the main player interface. The **Now Playing** list displays the files currently playing and pending.

Select from the **Menu** to use the following functions:

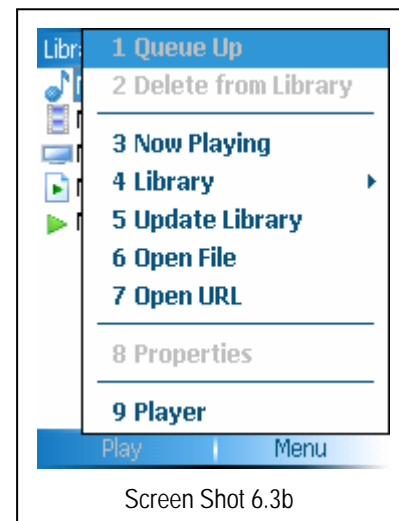
Library:	Choose a file to play from the library.
Move up:	Move the selected file up in the play list order.
Move down:	Move the selected file down in the play list order.
Remove from play list:	Delete the selected file from the play list, but the file is still saved in the media library.
Shuffle/Repeat:	Play the files in the play list randomly/repeatedly.
Clear Now playing:	Deletes all files from the current play list, but the files are still saved in the media library.
Error details:	Display error information about the selected file.
Properties:	Display detailed information about the currently selected file.



6.3 Library screen

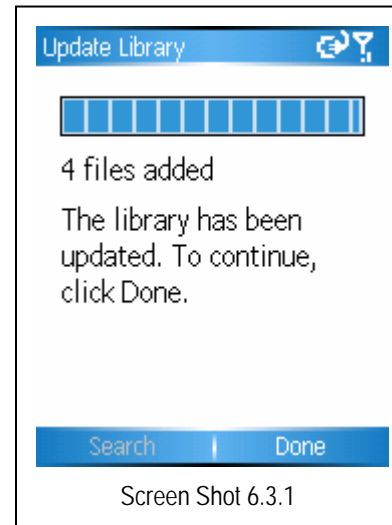
For this phone, all audio and video files are saved in the media **Library** (see the screen shot below). You can view and choose the files from the media library and add them to the play list for playing.

In Library or folders, press the **RSK** to open the **Menu** (see screen shot below). Select from the options displayed for the desired function.



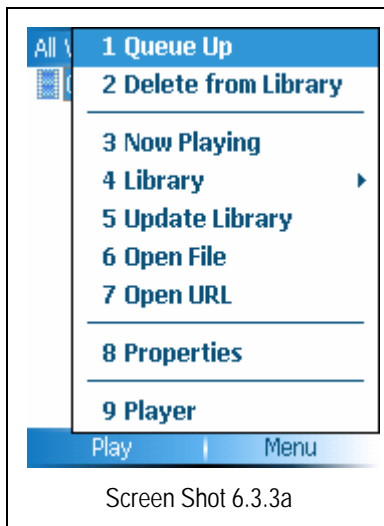
6.3.1 Update Library

To see newly added files before playing, you must update the **Library**. Select **Update Library** from the **Menu** to perform an auto search for new files (see screen shot below). Search results will be placed in their respective library folders.



6.3.2 Playing directly in Library

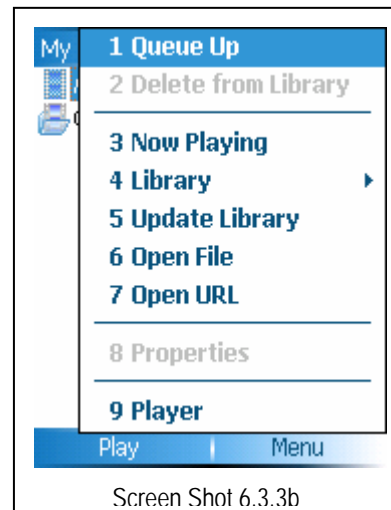
You can directly select and play files stored in the media **Library**.



6.3.3 Add files to play list

Only added to play list on playing can the files in Media Library be played with Windows Media Player.

If you need to add a new file existing in **Library** to play list, you have to find out the file in the library folder, select it, click **Menu > Queue up** (see the screen shot below) and then you can add it to the **Now Playing** list.



If you focus on a media library, select **Add to play list** from the **Menu** (see the screen shot below) and then you can add all files in that folder to **Now Playing** list.

6.3.4 Delete file in Media Library

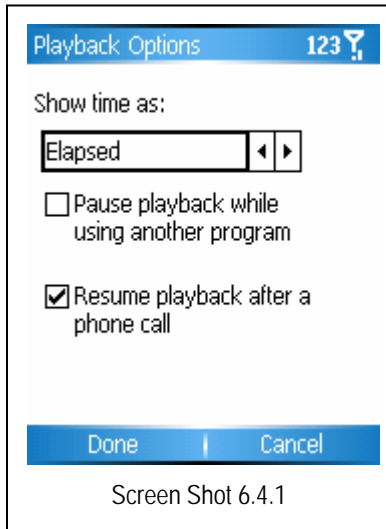
Move focus onto files you'd like to delete, select **Delete** from **Library**, then the file will be deleted from both media library and your phone.

6.4 Player settings

Press the **RSK** to select **Options** from the main **Menu** to set up the Windows Media Player.

6.4.1 Playback

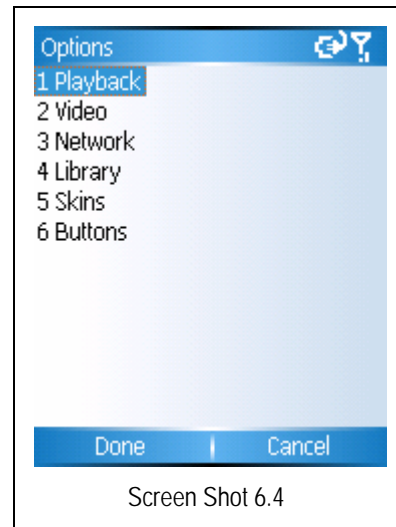
This option allows you to set display time stamp and play modes.



Show time as: Set the time display format of the file playing.

Pause playback while using another programs: If you do not use this function, the media player will continue playing when other programs are running (except the call function). If you enable this function, then the media player pauses playing when other programs are running.

Resume playback after a phone call: Enabling this function allows the media player to continue playing after a call has ended.

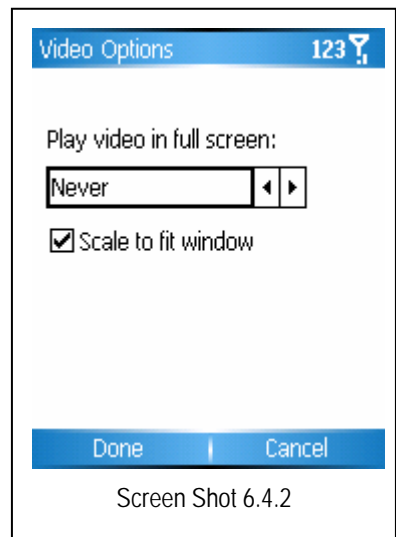


6.4.2 Video

This setting changes the viewing mode for video play.

Play video in full screen

- **"Never"** sets playing video files in Windows mode only.
- **"Only when oversized"** plays video files in full screen only when the resolution of files is larger than that of the screen.
- **"Always"** plays video files in full screen mode in all instances.
- **"Scale to fit window"** plays videos by zooming out when the resolution of the video file is larger than that of the screen.



6.4.3 Network

Depending on your Internet connection, you can change the connection speed to obtain better video and audio output.

6.4.4 Library

Here you can choose whether to enable player in Media Library.

6.4.5 Skins

Change the appearance of the Windows Media Player interface.

6.4.6 Buttons

Redefine button functions in the Windows Media Player interface.

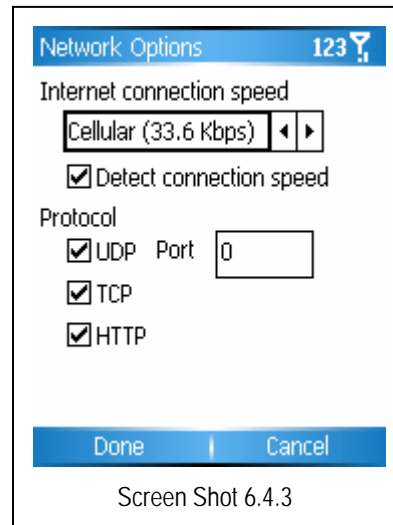
Hover over a function button you want to redefine, select **Assign** from **Menu** and follow the prompts.

Select **Reset** on **Menu** to restore default settings.

6.5 Audio/Video supported formats

Windows Media video format: wma, wmv

Moving Screen shot Experts Group (MPEG): mp3



7. Calendar

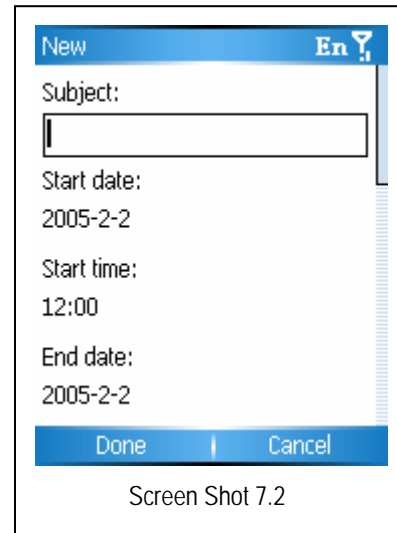
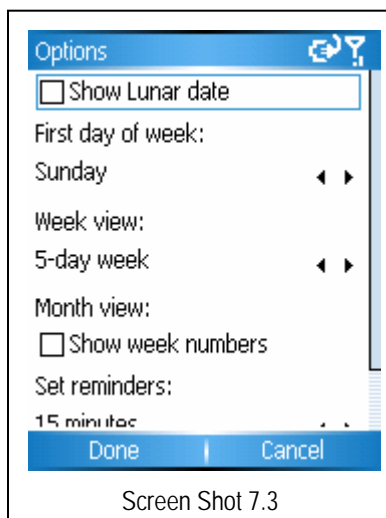
With the [Calendar](#) feature, you can view important dates, such as anniversaries and holidays and set events for special reminders.

7.1 Viewing calendar

Enter [Calendar](#), press the [LSK](#) to switch among day, week and month views.

7.2 Creating a date

From the [Calendar](#) screen, press the [RSK](#), select [Create](#) to add a new date. Make changes as needed to each option prompted.



7.3 Calendar settings

From the [Calendar settings](#) screen, select an item then press the [RSK](#) to change settings.

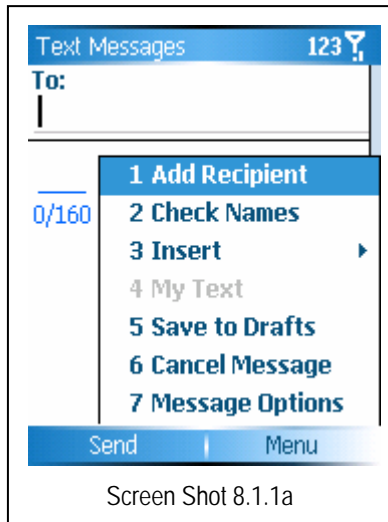
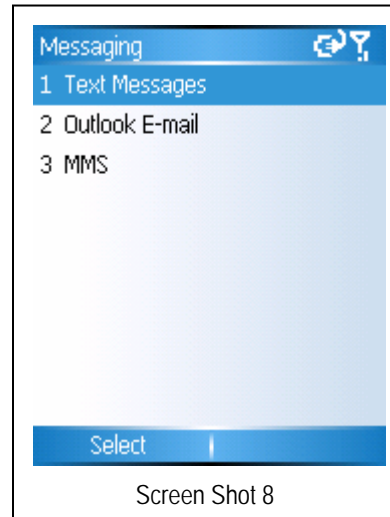
8. Messaging (SMS, E-Mail and MMS)

You can create, send, and receive E-Mail and SMS messages through Inbox synchronization or by connecting to your E-mail server. You can then view all of the messages from the Inbox on your cellular phone.

8.1 SMS service

SMS service is provided by your Internet Service Provider, which serves for transfer of short text messages between mobile phone users.

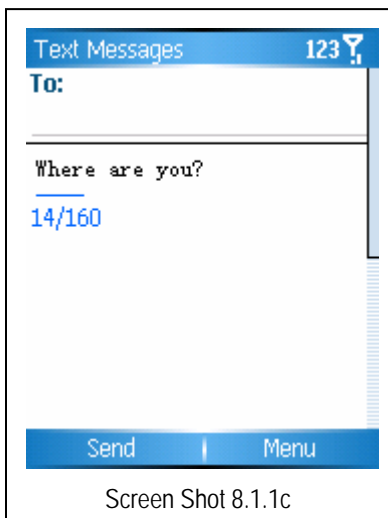
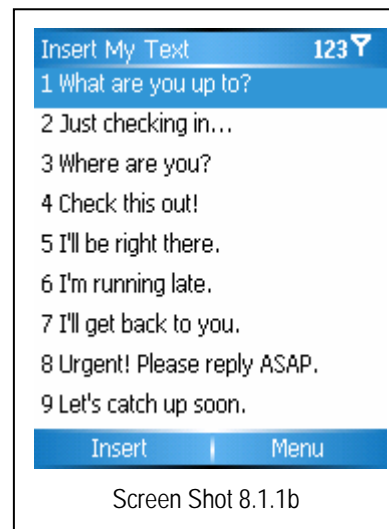
The first time you send an SMS, check that the SMS Center number has been added. You can consult your ISP for local SMS center numbers.



8.1.1 Creating and sending SMS messages

With SMS services, all received SMS messages will be listed on the screen. Press **LSK** to create a new SMS.

In the **To** field, you can directly enter the recipient's number or you can select **Add Recipient** from the **Menu**. Your cellular device also supports sending by group, enabling multi-recipients to receive SMS messages.

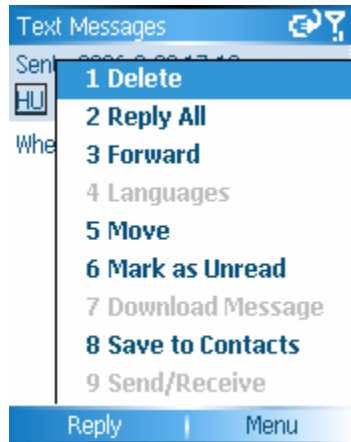


After entering recipients, use the navigation keys to move the cursor to the SMS edit area. Selecting **Quick Text** from the **Menu** will list several options for pre-typed text (see screen shot below). Make a selection, and then press the **LSK** to insert it into the edit area. Notice the word count and total word capacity is displayed on the left.

After editing the SMS message, press the **LSK** to send it to the recipient. The sent messages will be saved in the **Sent** folder in default mode.

8.1.2 Viewing SMS

On the SMS list screen, select the SMS you want to view and press **OK**. Press the **LSK** to reply to sender. Press the **RSK** to open the **Menu** and select other options available for this SMS message.

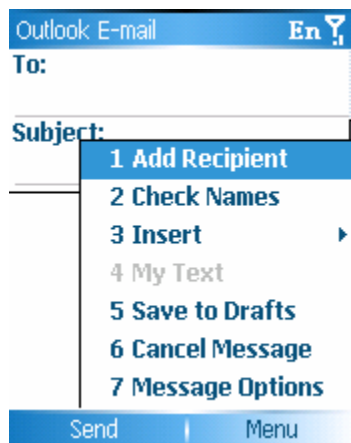


8.2 Outlook E-Mail

Your new cellular phone supports sending and receiving E-Mail, as well as synchronizing Outlook E-Mail from a PC.

The first time Outlook is used on your new cellular phone, an E-Mail account must be set up and the network must be configured. Select **Settings** from the **Menu** to perform these steps.

- From the Outlook screen, press the **LSK** to create an E-Mail account.
- Enter the address of a recipient, or click **Menu > Add Recipient** to add a single recipient or add multiple recipients.
- Enter **Subject**.



-
- After entering recipients and subject, use the navigation keys to enter the message edit area.
 - After editing your E-Mail, press the **LSK** to send it to the recipient list.
 - In default mode, all sent messages are saved in the **Sent** folder.

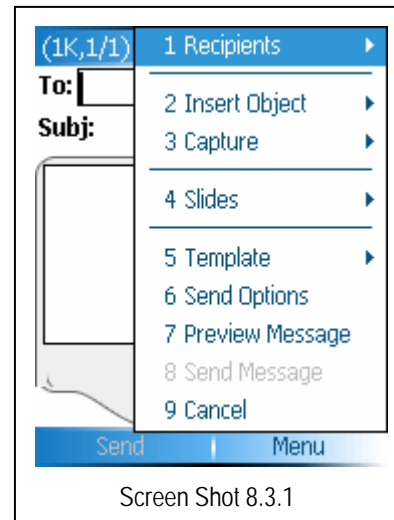
8.3 MMS

MMS is a multimedia information transferring operation proposed by CMCC, which can transfer multimedia information including text, screen shots, and audio files. MMS operation supports instant multimedia transfer from point-to-point, phone-to-Internet or Internet-to-phone.

 **Note:** All MMS settings have been pre-configured and most likely will not need additional changes.

8.3.1 Creating and sending MMS

- From the **Home** screen, press the **LSK** to create a new MMS.
- In **Recipients**, you can enter a phone number directly or select **Add Recipients** from the **Menu**. Your phone also supports group sending to multiple recipients.
- After entering **Recipients** and message **Subject**, fill in the corresponding content for Video, Text and Audio files. Select **Cancel** to abort editing and go back to the MMS box.
- Select **Preview** from the **Menu** after editing to view the message before sending.
- Press the **LSK** to send the MMS.



8.3.2 Receiving MMS messages

- An alert appears when a new MMS message arrives.
- You can load or view this message in the MMS box.
- You can also view the MMS after it has been completely downloaded onto your phone.

8.4 Menu in SMS/MMS/Email list

On the SMS/MMS/E-Mail screen, press **RSK** to open the **Menu** and to perform the following:

Delete:	Delete current message.
Reply:	Reply to all and Forward current message.
Folders:	Switch to other folders (Drafts, Outbox, Inbox, Sent Items, and Deleted Items).
Switch accounts:	Switch among SMS, E-Mail, and MMS accounts.
Move:	Move current message into other folders.
Mark as read:	Mark current item as read or unread.
Download Messages:	This feature is only available with E-Mail. Only the heading and subject are received initially for E-Mail. You must select to download the entire message to your phone.
Option:	Change options on messages or E-Mail.
Send/Receive:	Send or receive messages and E-Mail.

8.5 Folders of Mailing System

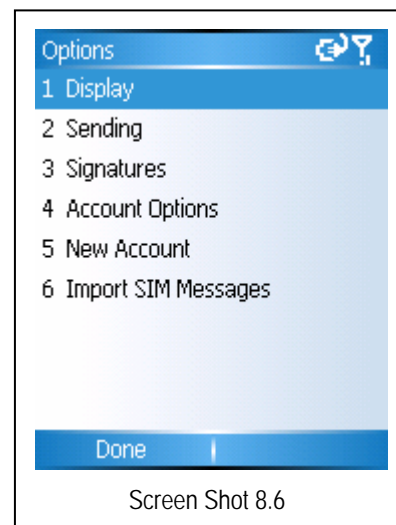
Folders of a mailing system contain **Drafts**, **Outbox**, **Inbox**, **Sent Items** and **Deleted**. For efficient use of storage space, please clear termly the old messages in Sent box. If the phone experience insufficient memory, receiving MMS messages is the only function allowed. Operations such as sending, saving and downloading are rendered unavailable until space is available or freed up.

- Drafts:** Stored messages considered incomplete or ready to send.
- Outbox:** Failed transmissions are stored here.
- Inbox:** All received messages are stored here.
- Sent items:** All successfully sent messages are stored here. If the auto save function of MMS is enabled, after an MMS is successfully sent, it will be saved into Sent items immediately.
- Deleted:** All messages deleted are disposed of here.
 ⚠️NOTE: If deleted from this folder, the messages will be permanently lost.

8.6 Options

To better utilize the mailing system, set the optional parameters.

On the SMS, E-Mail or MMS screens, press the **RSK** to select **Options** from the **Menu** to select and set up the following parameters.



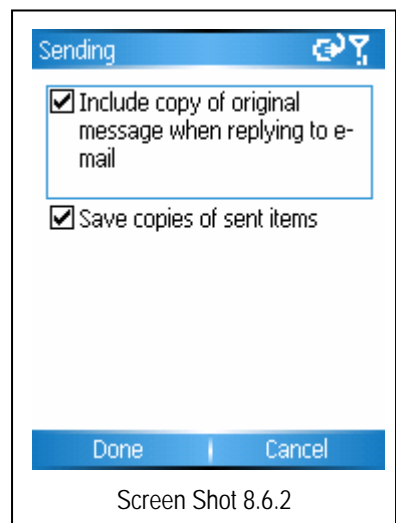
Screen Shot 8.6



Screen Shot 8.6.1

8.6.1 Display

Select option to display the time and date in E-Mail information and the manner in which it is displayed.



Screen Shot 8.6.2

8.6.2 Sending

Select option to include content of the original email in replies or

backup copies of sent E-Mail.



Screen Shot 8.6.3

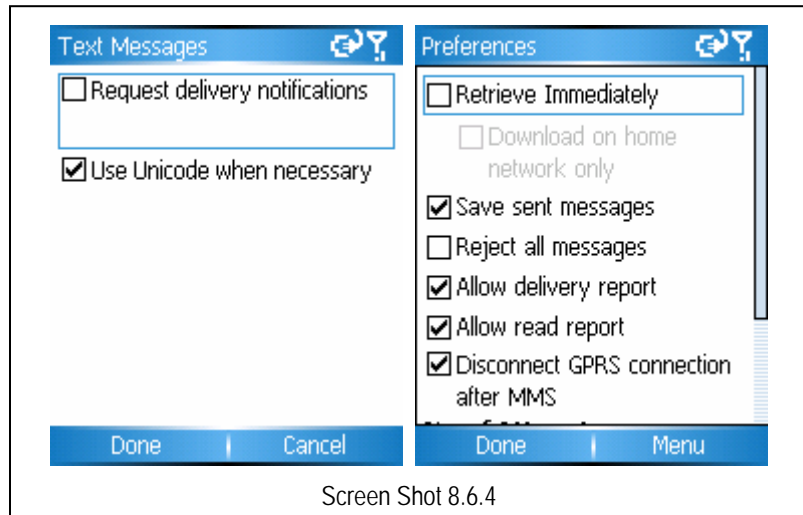
8.6.3 Signatures

Set a signature that will be displayed with all outgoing messages composed.

8.6.4 Account options

Here you can respectively set SMS and MMS.

The items in Settings includes:
whether to use Unicode which help correct errors in displaying content of messages sent from this phone or, whether to require service center to deliver send report after its forwarding a message to a recipient.



8.6.5 New account

You can set up an E-Mail account in order to send/receive E-Mail on your cellular phone. This phone supports POP3/IMAP4. Set up an account by following these steps.

E-mail Setup En ?	Auto Setup ↻ ?	E-mail Setup En ?
Your name: mengboyu	Attempting to obtain e-mail settings for sohu.com.	User name: <input type="text" value="mengboyu"/>
E-mail address: <input type="text" value="mengboyu@sohu.com"/>	Select Next to skip this step and enter your settings manually (recommended for corporate e-mail)	Password: <input type="password"/>
Automatic setup: <input checked="" type="checkbox"/> Attempt to obtain e-mail settings from the Internet.	<input type="button" value="Connect (ing...)"/>	Domain (if necessary): <input type="checkbox"/> Save password
<input type="button" value="Cancel"/> <input type="button" value="Next"/>	<input type="button" value="Previous"/> <input type="button" value="Next"/>	<input type="button" value="Previous"/> <input type="button" value="Next"/>
E-mail Setup 123 ?	E-mail Setup En ?	E-mail Setup 123 ?
Server type: <input type="text" value="POP3"/>	Incoming Server: pop3.sohu.com <input type="checkbox"/> Require SSL connection	Download the following messages: <input type="text" value="Last 3 days of e-mail"/>
Account name: POP3	Outgoing Server: <input type="text"/>	First 500 bytes
Network: The Internet	<input type="checkbox"/> Outgoing server requires authentication Outgoing Server Settings	<input type="button" value="Previous"/> <input type="button" value="Next"/>
<input type="button" value="Previous"/> <input type="button" value="Next"/>	<input type="button" value="Previous"/> <input type="button" value="Next"/>	<input type="button" value="Previous"/> <input type="button" value="Next"/>
E-mail Setup 123 ?	E-mail Setup ↻ ?	
Note that connecting automatically may result in higher connection charges. Connect automatically and check for <input type="text" value="Never"/>	Setup complete. To begin using e-mail, select Finish and select Send/Receive from the Menu.	
<input type="button" value="Previous"/> <input type="button" value="Next"/>	<input type="button" value="Previous"/> <input type="button" value="Finish"/>	

Screen Shot 8.6.5

8.6.6 Export SIM Message

This feature helps you download messages saved on your SIM card.

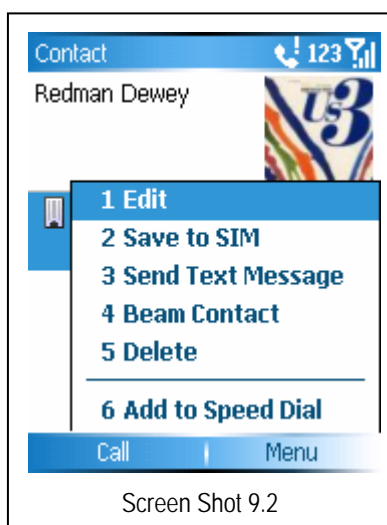
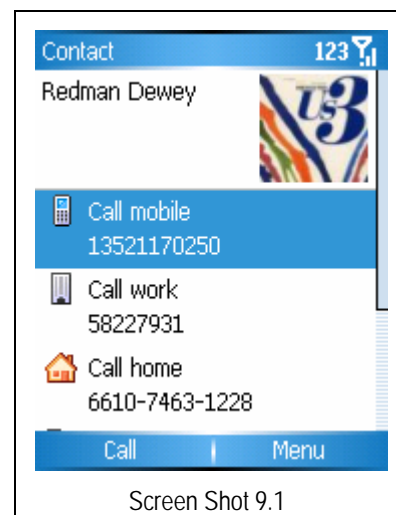
9. Contacts

Contacts assimilate an online address book where information about people and businesses you communicate with regularly are stored. For example, you can store multiple phone numbers, E-Mail addresses, street addresses, web pages, birthday, anniversary date, etc. You can use the **Contact** list to dial phone numbers and compose E-Mail or SMS messages directly from the “contact card”.

The **Contact** list displays the names of your contacts alphabetically, along with an abbreviation for the default communication method, such as the person's work phone number (w) or home phone number (h). This makes it easy to reach the contact using the method you prefer. Your smart phone will automatically set the work (w) phone number as the default dial number.

9.1 View contact information

- Enter **Contact**, Entries on the SIM card and the phone are listed here.
- All contacts are arranged alphabetically. The contacts saved to the phone's memory are ranked before those saved on the SIM card.
- Number types are identified by letters, e.g., if the default number is a work number, a (w) is displayed behind the number. If it is a home number, an (h) is displayed behind the number. Those numbers saved on the SIM card will be displayed with a SIM icon beside them.
- Select a contact, press **OK** to view details.



9.2 Modifying contact information

To modify a contact, enter the detailed information, then press **RSK** to open the **Menu** and select **Edit** to modify the record.

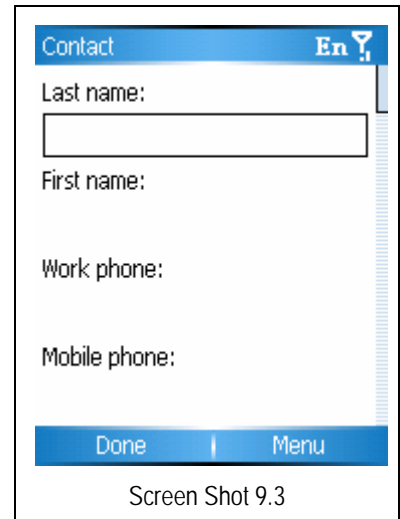
9.3 Creating a contact

From the **Contact** list screen, press **LSK** to **Create** (See the screen shot 9.3). Set up a new contact record on the phone by filling in the blanks, item by item, then press **LSK** to complete the setup. This new record is now added to your **Contact** list.

To enter an extension number or an International call number, you might enter a pause after dialing the main number. To enter a pause, select **Insert pause** from the **Menu** to insert "P" between main number and its extension number. If you want to increase the pause time, insert multiple "P's" in between the number and the extension.

To manually enter a number, select **Insert wait** from the **Menu**.

It is also possible to add a contact from a number enclosed within a Message/E-Mail Message, or Call History.



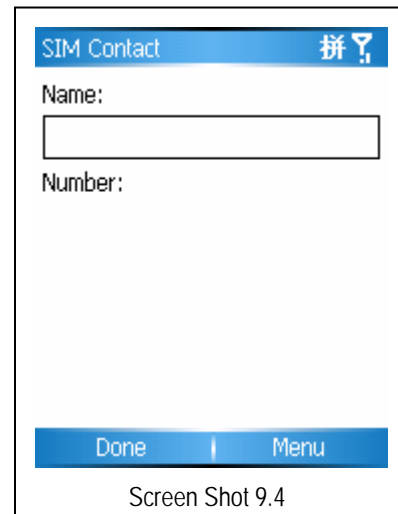
Screen Shot 9.3

9.4 Creating a contact on SIM card

To create a contact record on a SIM card, press the **RSK** on the **Contact** list screen. Select **Create a SIM contact** from the **Menu** to begin the new record.

Generally, records saved on SIM cards will only record the contact's name and a unique number, which is dependent on the types and function of the SIM card itself.

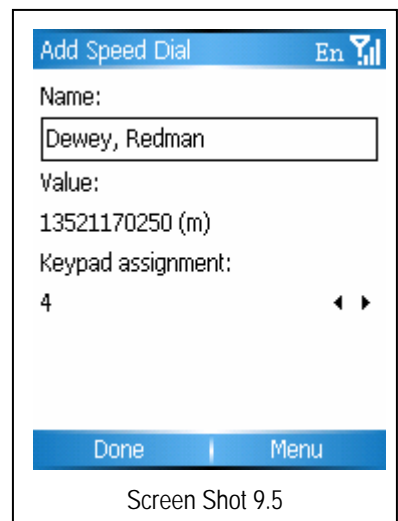
Please consult Internet service operator for details.



Screen Shot 9.4

9.5 Creating a speed dial to a contact

1- or 2-digit speed dialing can be assigned to your phone for frequently dialed numbers. For single-digit speed dialing, press and hold the speed dial to initiate a call. For double-digit speed dialing, press the first digit, then press and hold the second digit to initiate the call.



Screen Shot 9.5

9.6 Finding a contact

From the [Contact](#) list screen, locate a contact as follows:

- Pressing navigation up/down scrolls through the list of contacts;
- Pressing number keys queries the device for all records containing the series of numbers pressed, i.e., the contact including the letters and/or a numbers pressed displays the matching contact.
- To locate a record on the SIM card, enter the SIM password and the device will locate the contact.

Note: When you press number keys to locate contacts recorded to the phone, the device only compares the default number.

9.7 Beaming contacts

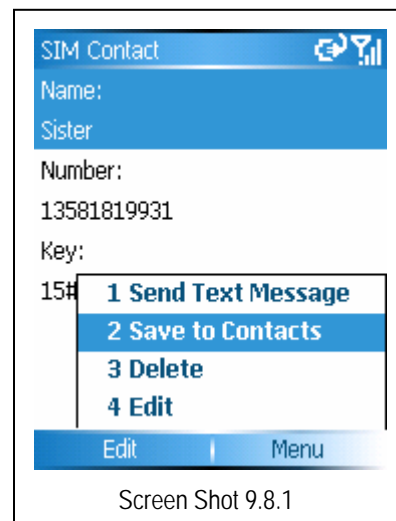
Beaming contacts from one device to another is supported by your phone. To beam one contact to another device, select [Beam Contacts](#) from the [Menu](#) option in the [Contact](#) list. Aim the infrared interface on your phone to the receiving device, then press [Beam](#) to begin the transfer.

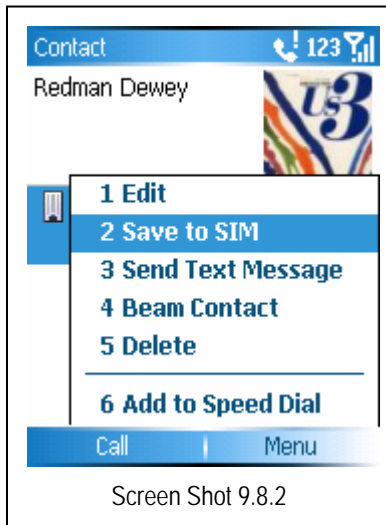
9.8 Copying contacts between SIM card and Phone

Your device supports copying contact details between the SIM card and the phone.

9.8.1 Copying SIM contacts to Phone

Enter details of a SIM contact, and then click [Menu > Save to Contacts](#). You will be prompted to save it as a new item, or add it in other records. If you select to [Save as new](#), it will open new contacts details for you to fill in the blank name and phone type. Press the [LSK](#) to insert the number.





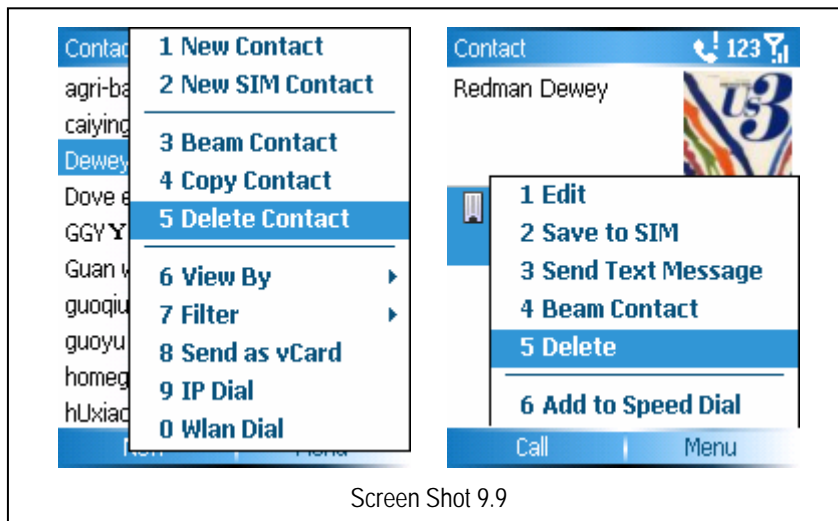
Screen Shot 9.8.2

9.8.2 Copying Phone contact to SIM card

Since only one primary number is allowed on the SIM card, you must select one from the detailed [Contact](#) list. The device will require confirmation before saving to the SIM card. Press the [LSK](#) to complete copy.

9.9 Deleting contacts

Contacts can be deleted from the Contact list and the contact details screen.



Screen Shot 9.9

10. ActiveSync

Before synchronization can begin, Active Sync 3.7 or above must be installed on your desktop or notebook PC. (ActiveSync comes pre-installed on your cellular device.) Use the Companion CD that came with your device, or install ActiveSync for free by downloading the software from Microsoft's web site at <http://www.microsoft.com/windowsmobile>.

10.1 Using ActiveSync

10.1.1 Synchronize with a PC

- After installation of the ActiveSync software, use the USB cable to connect the phone and the PC.
- Follow the on-screen instructions to establish the relationship between the PC and the phone. The synchronization process will start automatically when the relationship has been established. Outlook contacts, schedules, tasks, E-Mails, etc. will be synchronized to the phone.
- In the ActiveSync function screen, select "Synchronization" to start the synchronization process and select "Stop" to end the synchronization process.

Note: In default mode, ActiveSync will not synchronize all Outlook information. Related options must be set before all data will be synchronized.

10.1.2 ActiveSync Server

Before synchronizing information with a server, make sure all the requested server authentication information is correct, such as Username, Password, and the name of the Microsoft Mobile Information Server.

To set up ActiveSync Server

- From the ActiveSync screen, select **Menu > Options > Server settings > Connect**.
- In **Username**, enter your Microsoft Exchange user name.
- In **Password**, enter your Microsoft Exchange password.
- In **Domain**, enter the name of the domain of your Exchange server (if required).
- In **Server name**, enter the name of mobile information server you want to connect to.
- Press **OK** to finish setup.
- Press the **Start** soft key to synchronize.

Note: After a partnership has been set up between phone and PC, a long-distance connection with the server may also be available.

10.2 Synchronizing information

10.2.1 Synchronizing the inbox

When you synchronize mail stored in the inbox on the computer or stored on the server, the system only synchronizes mail received in the last three days, and only synchronizes the initial 500 bytes for each mail. To view all contents of each mail, you must download the complete E-Mail.

Mail stored in the phone and on the computer is synchronized. If you delete an email in the phone or on the computer, the phone or the computer will delete this email automatically in the next synchronization process.

To synchronize the other files in Outlook and mail stored in customized folders, you must select and highlight these folders in the phone.

Note: SMS and MMS cannot be synchronized.

10.2.2 Synchronizing the schedules

You can synchronize schedules stored in the phone with those stored in Outlook or Mobile Information Server on the PC.

In default mode, only the schedules stored in the past two weeks and the future schedules will be synchronized.

10.2.3 Synchronize the contacts

All contacts are synchronized in the default mode.

Once the synchronization process is complete, contacts created or deleted from either the phone or the PC will be correspondingly created or deleted from the PC or the phone.

10.2.4 Install software to the phone

Install software on your phone by using ActiveSync function on the PC. Follow these steps.

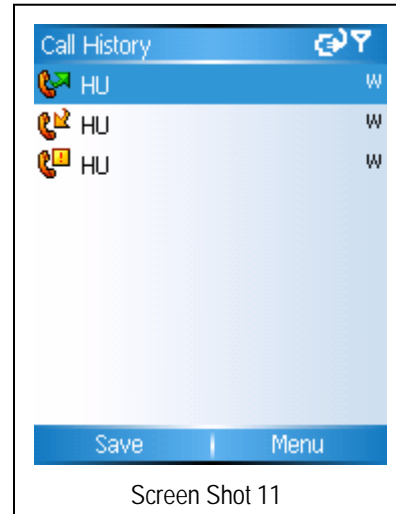
- Establish a connection between the phone and the PC by using ActiveSync.
- Run setup file in the computer.
- Select the setup location in the phone and begin to install the software. If the Memory card has been inserted into the phone, the system will alert you to choose the storage location.

11. Call history

The cellular device's **Call History** records information such as phone number or call time of dialed calls, answered calls, and missed calls. Different icons are assigned to identify different record types. The following icons indicate the corresponding type of entry to the **Call History**:

 Dialed calls  Answered calls  Missed calls

Note: Where a number already stores in your **Contacts** list appears in the **Call History**, its corresponding name and/or number will be displayed.

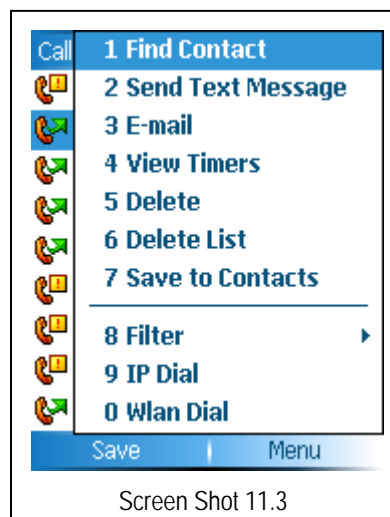
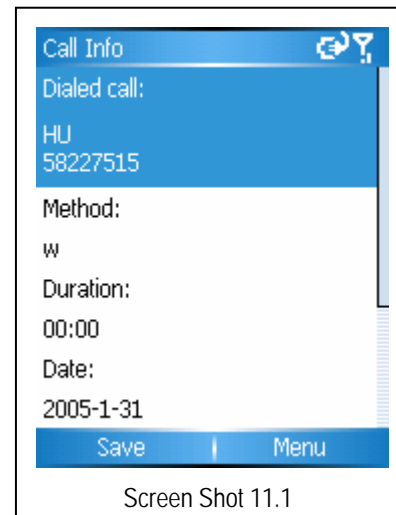


11.1 Viewing Call history

In the **Call History** list, highlight a record. Press **OK** to view the details.

11.2 Saving number

In the **Call History** list, highlight an item. Press the **LSK** to save the record. Enter information of the contact to complete the record.



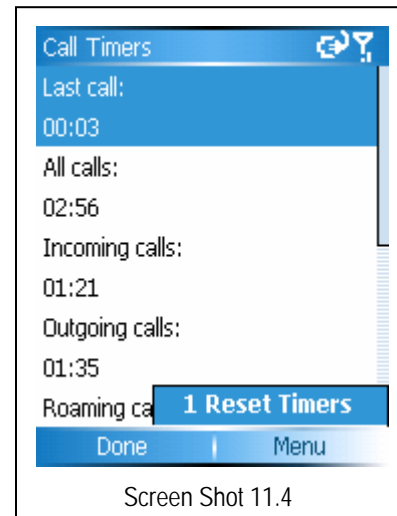
11.3 Locating a contact

To view all details for a contact in the **Call History**, select **Find contact** from the **Menu**. If no number or name matches exist, a prompt will be displayed.

11.4 Viewing timers

With **Call Timers**, you can view the accumulative time of the last call, all calls, incoming calls, outgoing calls, calls while roaming and data calls.

Select **Reset Timers** from the **Menu** to clear out all time records. All timers will start at **00:00** except for "current accumulative time."



Screen Shot 11.4

11.5 Deleting list

On the **Call History** screen, select **Delete** from **Menu** to delete the highlighted record or select **Delete List** to delete the whole record list.

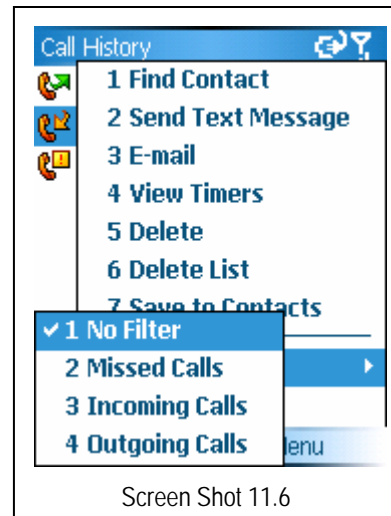
11.6 Filter

On the **Call History** screen, specify the type for contacts you want to view, i.e., **Missed Calls**, **Incoming Calls**, **Outgoing Calls**.

Click **Menu > Filter** and then you can filter call records by category: **Missed Calls**, **Incoming Calls**, or **Outgoing Calls**.

11.7 Net call within Call History

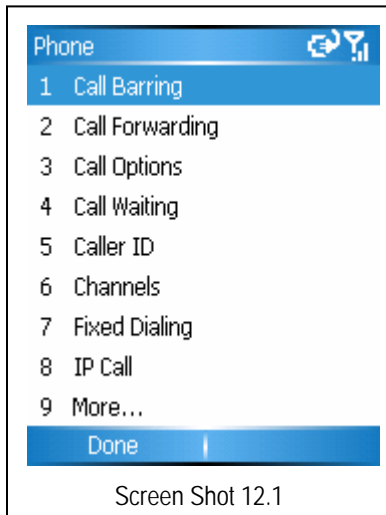
When you want to initiate a call through WLAN from the **Call History** menu, you must select the number first, and then click the **RSK** to select **WLAN Dial**. If the number has a # prefix, you can click the **Green** key to initiate a Net call.



Screen Shot 11.6

12. Settings

In **Settings**, you can make changes to the device defaults. Select **Settings** from the main **Menu**. Select **More...** to go to see more options.



Screen Shot 12.1

12.1 Phone

Select **Phone** from the **Settings** menu to view options available.



Screen Shot 12

12.1.1 Call Barring

You can block selective incoming or outgoing calls based on different conditions. A restricted password is required to utilize this feature, and the restricted password must be acquired from your service provider.

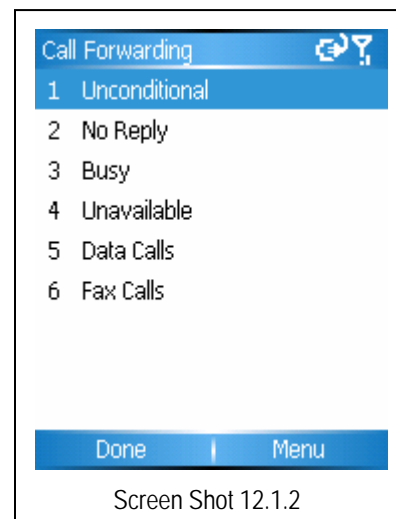
Note: If an incorrect restricted password is entered 3 times consecutively, the **Call Barring** function will be locked and unusable.

Note: The **Call Barring** feature requires network support for proper use.

12.1.2 Call Forwarding

Based on conditional criteria, you can redirect incoming calls to optional phone numbers (see screen shot 12.1.2).

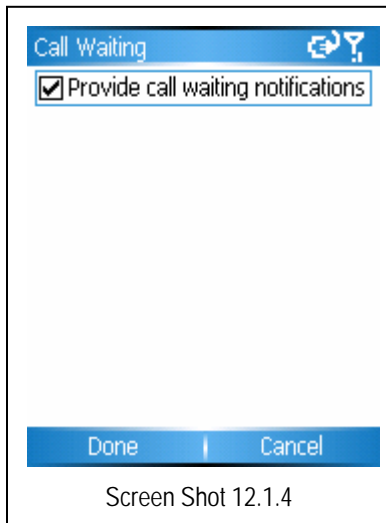
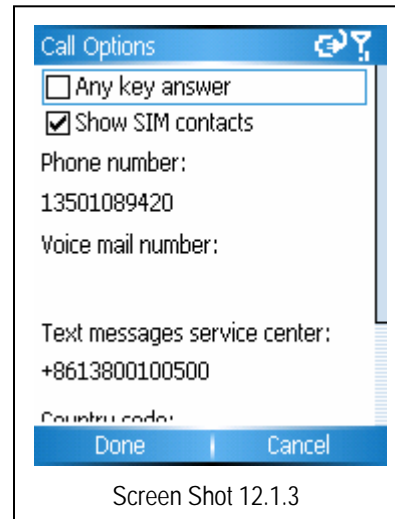
Note: This function needs network support, and has been enabled on your phone. Please consult your Internet Service Provider for details.



Screen Shot 12.1.2

12.1.3 Call Options

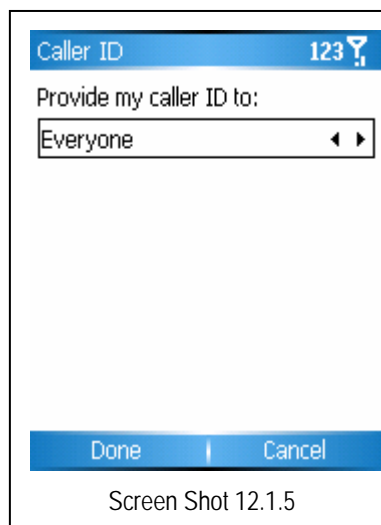
In **Call Options**, using the check box will enable the **Any key answer** feature or **Show SIM contacts** saved in the **Contacts** list. You may also setup **Voice mail** and your **SMS center** with this set of options.



12.1.4 Call waiting

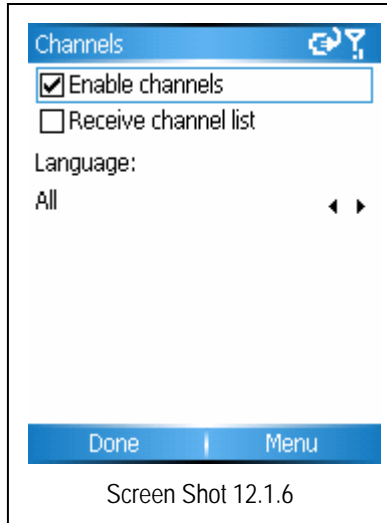
Enabling the **Call Waiting** feature alerts you that another call is coming in while on a current call.

Decide to hide or display the show your number to others, or contacts currently in your **Contacts**



12.1.5 Caller ID

incoming caller's phone number, only show your number to those list.



12.1.6 Channels

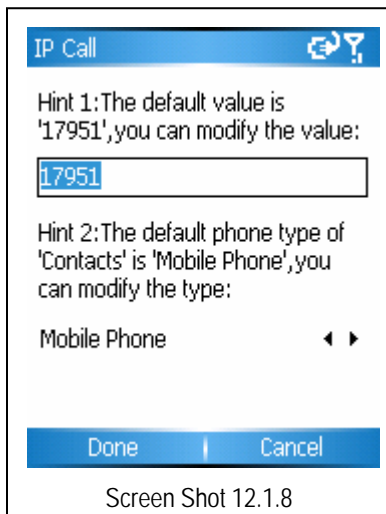
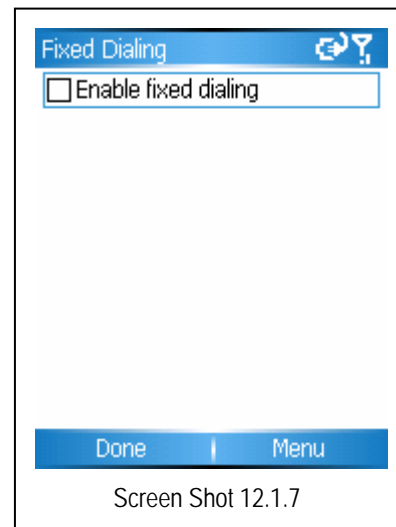
Using this function, you can receive a broadcast information list with whose languages can also be set.

Note: This function requires support from your Internet Service Provider.

12.1.7 Fixed Dialing

Clicking this check box toggles between enabling and disabling fixed dialing.

Note: This function requires support from your Internet Service Provider.



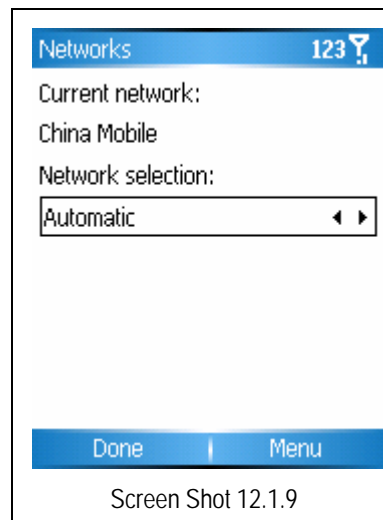
12.1.8 IP Call

Here you can set IP code that once you choose to dial a number by means of IP, find IP call on Menu and dial the original number, then you can add IP code ahead of the number you are to dial.

12.1.9 Networks

Using this setting allows you to view the current network in use. You may also choose or search the method in which the network is selected.

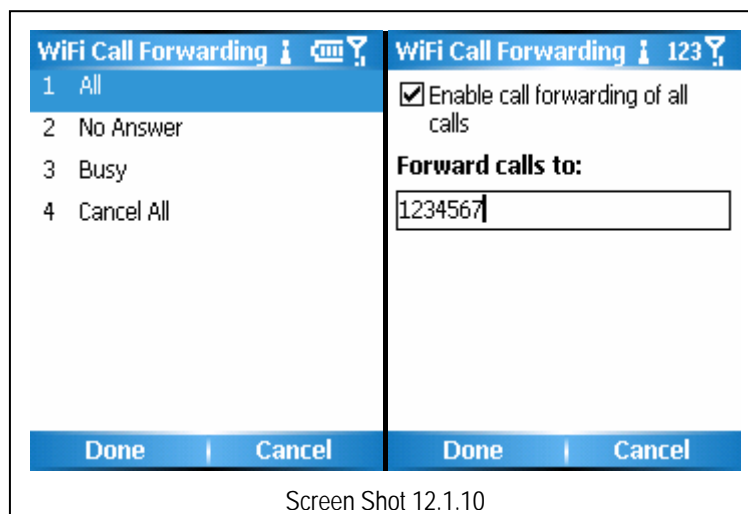
Note: Not all functions described above are supported by every network. Please consult your Internet Service Provider to determine if this function is supported.



12.1.10 WiFi Call Forwarding

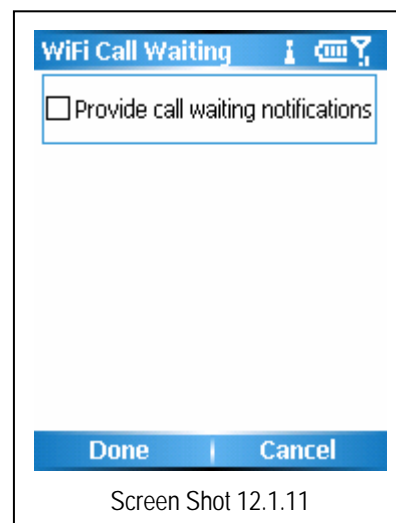
When you do not wish to answer incoming calls, you can direct such calls to a different number.

Note: This feature requires network support, and has been enabled on your phone. Please consult your Internet Service Provider for details.



12.1.11 WiFi Call Waiting


Toggle this check box to enable/disable WiFi Call Waiting on or off. If enabled, you will be prompted on the screen when an incoming call is received while the current call is in progress.

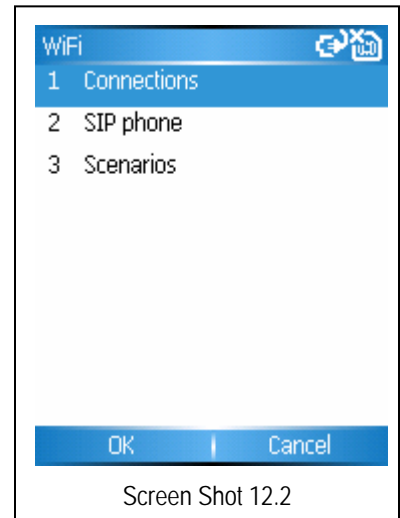


12.2 WiFi

Check for a Wireless LAN signal

Before you start a Wi-Fi connection, verify that your device has access to a Wireless LAN channel signal. You can check the current wireless connection status from the following three screens on your device.

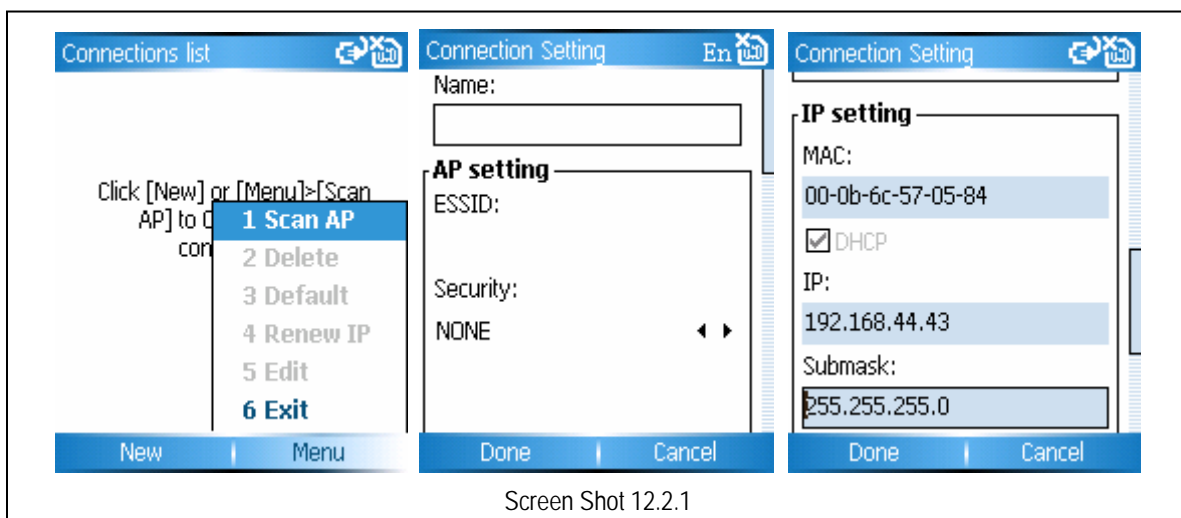
1. **Home screen:** If your device discovers a Wireless LAN connection, a connection icon appears in the status bar. In addition, a  icon appears in the top-right corner.
2. **Wireless Manager:** The current connection status and signal quality for each specific wireless channel appears on the Wireless LAN Manager screen with the current configuration.
3. **Configure Wireless Networks screen:** This screen displays the wireless networks currently available and allows you to add new ones if available.



Note: WLAN (Wi-Fi) is the default wireless channel setting for your device. However, GPRS launches by default if your device does not detect a Wi-Fi signal.

12.2.1 Wi-Fi Connection

- Click **Start > Settings > Wi-Fi**, then enter **Connections**. Following the instructions on the screen, you can either click **New** to connected to a new access point, or select **Menu > Scan AP** to allow the device to scan for available access points.



Change Name/AP Setting/IP Setting

- **Name:** Name for wireless network.
- **AP Setting:** Setup AP-related parameters, i.e., ESSID, Authentication, and Password.
- **IP Setting:** Set TCP/IP for wireless LAN. User can choose to auto-retrieve IP Address or use a static IP Address.
- Select **Menu > Scan AP** to start auto-scanning for available APs. A list of available access points is presented displaying each access point's signal strength. Select from the list of available APs to complete connection setup. ESSID has been assigned and IP address has been auto-retrieved.

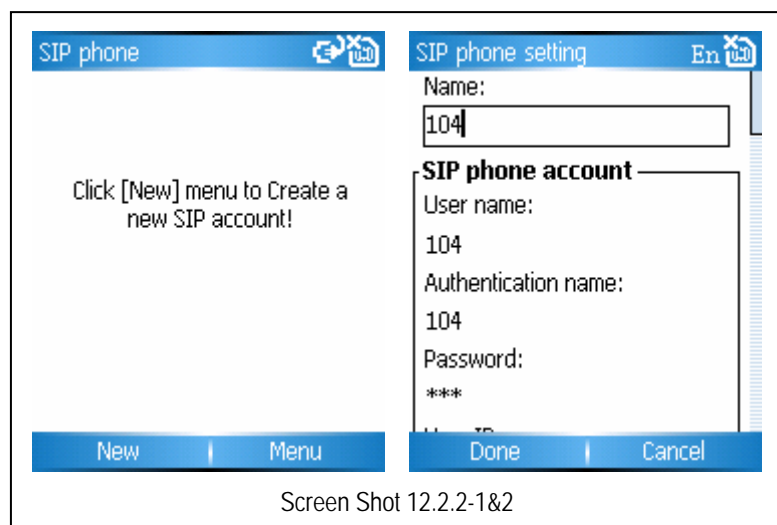
This device supports up to 16 profiles. To connect to a WLAN, the device automatically uses the default profile. If a default profile has not been defined, the phone will select the best signal profile.

12.2.2 SIP Phone

Before the SIP phone feature can be used, the following settings must be enabled.

Click **Start > Settings > Wi-Fi > SIP phone**. Click **New** to set up a new SIP account.

1. In **Name** specify a name for your SIP account.
2. In **SIP phone account** fill in the

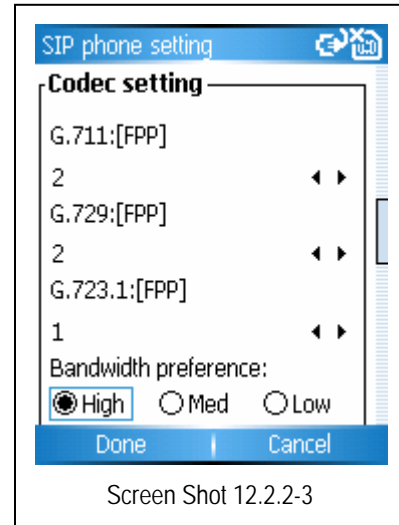


information required, such as User name, Authentication Name, Password, Server address, Port, Proxy, and Proxy port, all of which have been provided with your phone at purchase.

- | | |
|-----------------------------|--|
| User name: | Chosen or assigned sequence of letters and/or numbers, when logging on at the sip registrar serve. |
| Authentication name: | A sequence of letters and/or numbers which is used to authenticate at the registrar server. |
| Password: | A sequence of letters and/or numbers which is used to authenticate at the registrar server. |
| User ID: | An chosen alias or form name similar to the user name. |
| Register server: | Simply a computer in a network that contains the information about which computer where any particular member of staff is located. |
| Prot: | Used to listen to the SIP message arrived/sent to the register server. |
| Proxy server: | A proxy server supplies the service to find routes for SIP requests or responses. |
| Port: | The port is used to listen to the SIP message arrived/sent to the proxy server. |
| Sip Service Lookup: | Queries which services are supplied within the register domain. |

3. **Voice Encoding/Decoding settings (Codec Setting)** allows users to change the Voice Encoding/Decoding settings and Network bandwidth to obtain the best voice performance with the SIP phone. It is suggested that users retain the default settings for optimum use.

FPP: Frames per Packet
For example: The default frame length is 80 samples (10 ms) based on an 8K sample rate, so if FPP of G.711 is set to 2, that means a packet will contain 160 samples (20 ms).
 Default frame length of G.729: 80 samples, 10 ms
 Default frame length of G.723: 240 samples, 30ms



Screen Shot 12.2.2-3

When you select a different **bandwidth preference**, the phone will use the Codec according to the sequence:

High: G.711Ulaw, G.711Alaw, G.729, G.723 (currently do not support on the phone)

Medium: G.729, G.723, G.711Ulaw, G.711Alaw

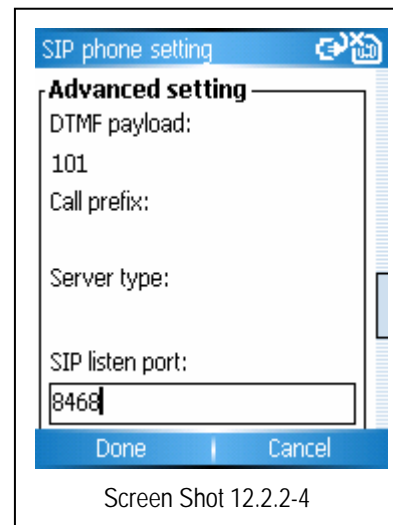
Low: G.723, G.729, G.711Ulaw, G.711Alaw

4. This setting is for advanced users and/or SIP phone service operators only.

DTMF payload number according to RFC2833

Call prefix: The content in this field will be added in front of number dialed. Some service providers require special prefixes to access certain services.

Server type: The phone will perform special processes for some servers. We use the content of this field to identify the type of SIP servers.



Screen Shot 12.2.2-4

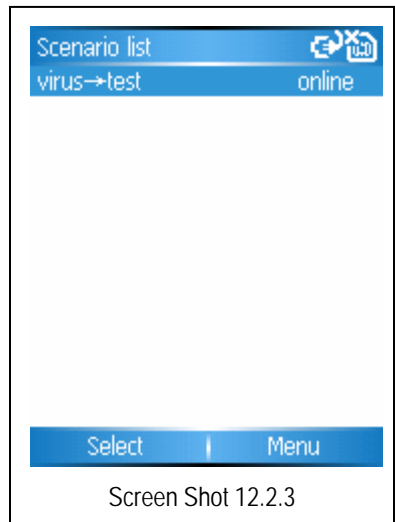
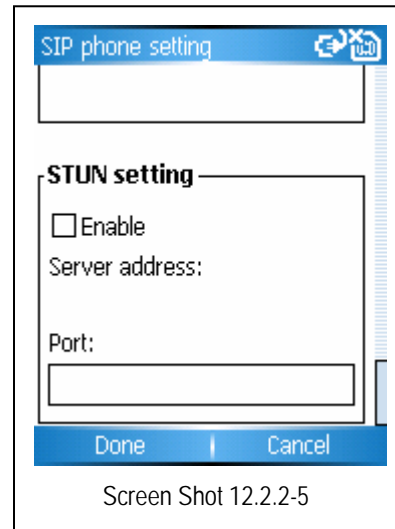
5. **STUN** allows setup for some SIP service providers. Enabling this setting can solve some known NAT transport issues. Comply with the information offered by the service provider as standard.
6. Select **Done** when all information has been entered.

To use the SIP phone function, press # from the **Home** screen, then enter another SIP number of a mobile phone, or a telephone number covered by the wireless network. In this scenario, a SIM Card is not needed to support the originating call.

This device supports up to 16 profiles, but requires one profile to be set as the default for registration. To use a different profile, you must set it as the default first.

12.2.3 SIP phone scenarios

To use **Scenarios**, you must configure the Wireless LAN settings and set up SIP account first. This associates the WLAN with the SIP phone so that once your device enters a WLAN environment it will trigger the associated SIP phone registration in order to use these features.



12.3 VPN

A VPN connection helps you to securely connect to servers via the Internet, such as a corporate network. Ask your network administrator for your user name, password, domain name, TCP/IP settings, and host name or IP address of the VPN server before you begin setting up your VPN connection.

12.3.1 Create a VPN connection

Every network connection is different. You should gather all of the relevant information or network settings you need before starting this process.

From the [Home](#) screen, click [Start > Settings > VPN](#).

Click [Menu > Add](#).

Enter the following information, and click [Done](#).

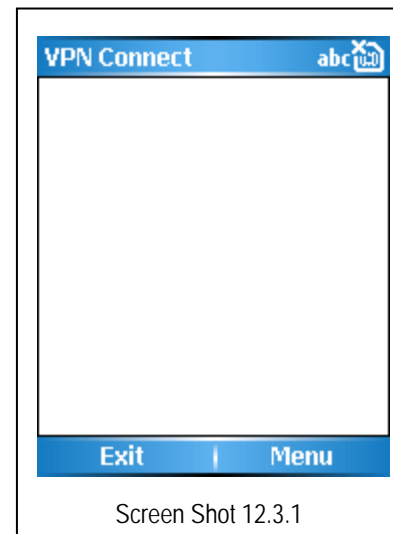
- In [Description](#), enter a name for the connection.
- In [VPN type](#), select the type of VPN.
- In [Server](#), enter the VPN server name.
- In [Connects from](#), select the type of network from which you will connect to the VPN (typically [The Internet](#)).
- In [Connects to](#), select the type of network to which you will connect (typically [My Corporate Network](#)).
- In [User name](#), enter your user name for the VPN.
- In [Password](#), enter your password.
- In [Domain](#), enter the domain name, if required.
- If you selected [IPSec](#) in [VPN type](#), in [IPSec authentication](#), select the type of authentication: [Pre-Shared Key](#) or [Certificate](#).
- If you selected [Pre-Shared Key](#) in [IPSec authentication](#), in [IPSec Pre-shared key](#), enter the key.

12.3.2 Edit a VPN connection

From the [Home](#) screen, click [Start > Settings > VPN](#).

Click [Menu > Edit](#).

Changed any information, and click [Done](#).

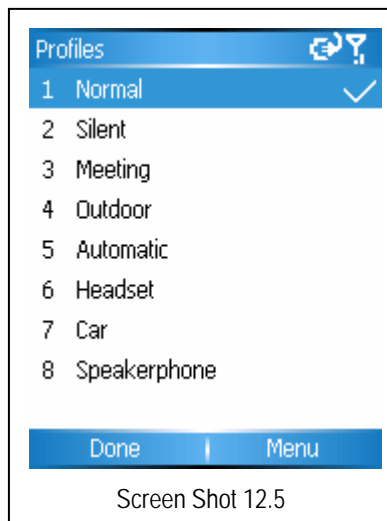


12.3.3 Delete a VPN connection

From the **Home** screen, click **Start > Settings > VPN**.
Click **Menu > Delete**.
Click **Yes**, and click **Done**.

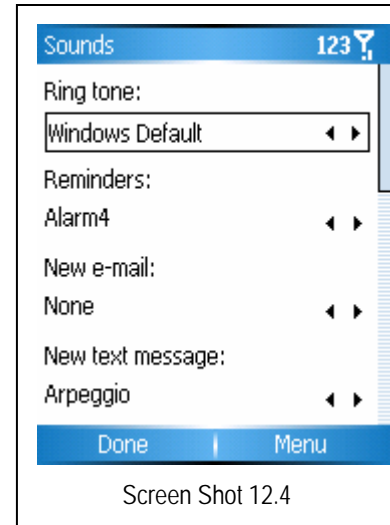
12.4 Sounds

Select **Sounds** from the **Settings** menu to enter the system sound settings. Choose from the options to change the audio prompts for different sound events.



12.5 Profiles

With **Profiles**, you can set up different sound schemes to coincide with different environmental surroundings or events.

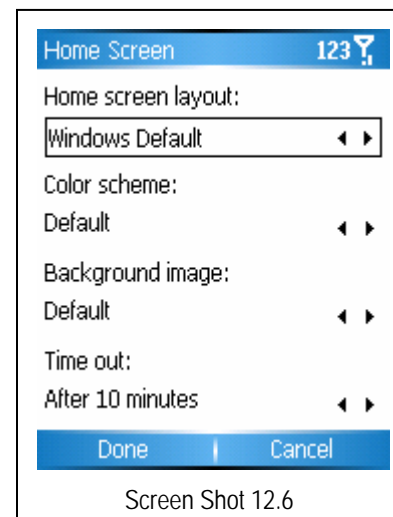


Screen Shot 12.4

12.6 Home screen

Settings for the **Home screen** can be set for layout, color scheme, background image, and phone and time intervals.

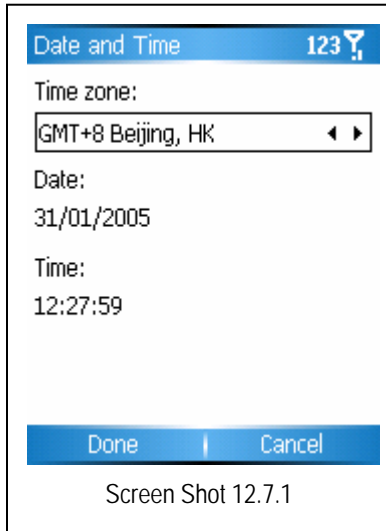
Note: Image files to be set as background wallpaper must be in GIF, JPG or BMP format.



Screen Shot 12.6

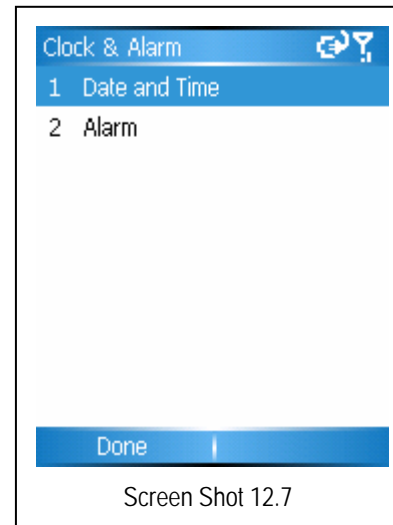
12.7 Clock & Alarm

Adjust various settings for the clock or alarm here.



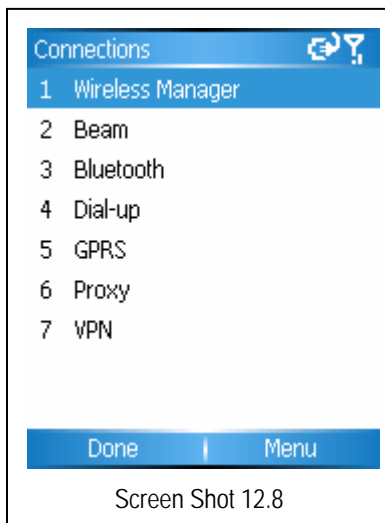
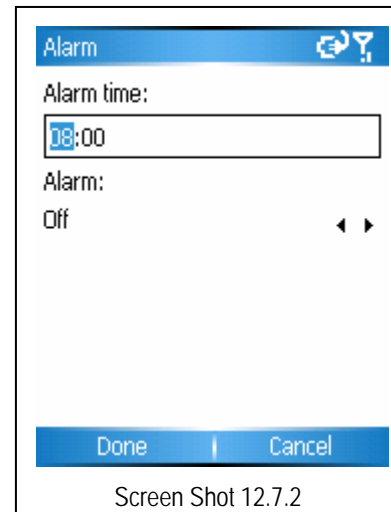
12.7.1 Date and time

Set the local time zone and display mode of the system date and time here.



12.7.2 Alarm

Set the alarm and activate it here. You will be alerted when the alarm setting occurs.

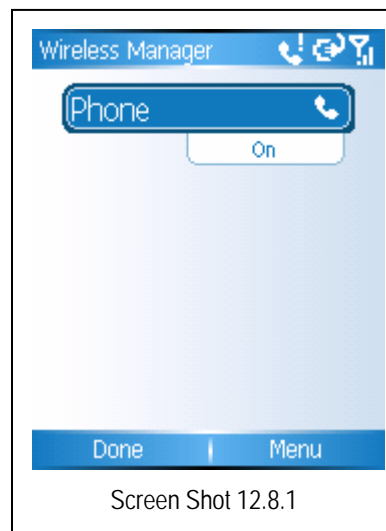


12.8 Connections

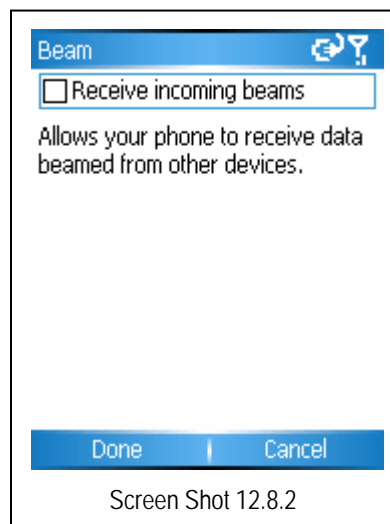
External device settings are found here, i.e., beam, Bluetooth, gprs, proxy and VPN.

12.8.1 Wireless Manager

Wireless Manager allows you to manage and view the status of GPRS/UMTS or Wireless LAN connections. You can use the device's **Power Save Mode** to make optimal use of the battery under the WLAN networking environment, view a variety of data related to the current configuration and signal quality, and increase network security. To run a Wireless LAN on your device, access to broadband Internet and an access point or router that emits WLAN signals is required. If you do not have access to broadband Internet, consult your ISP before you try to run this utility. However, the availability and range of your device's WLAN signal depends on the number, infrastructure, and other objects through which the signal passes.



Note: To activate a second-generation network like GPRS on your device and communicate with other devices on the network, you must have a SIM or USIM card installed on your device.



12.8.2 Beam

Via an infrared interface on this phone, you can enable transfer and send data to other infrared storage devices.

12.8.3 Various settings of network connections

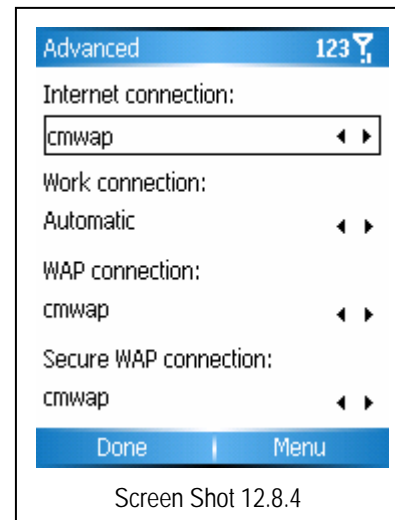
This phone allows connections to both the Internet and WAP. Therefore, you are provided with various means of connecting to a network, including dial-up, GPRS, proxy and VPN. Additional connection schemes can be added for the various means of connection or modifications to the existing schemes can be performed.

Note: Factory settings for this device should suffice for network connections. If you modify connection schemes, restore factory settings by selecting the **Reset** option.

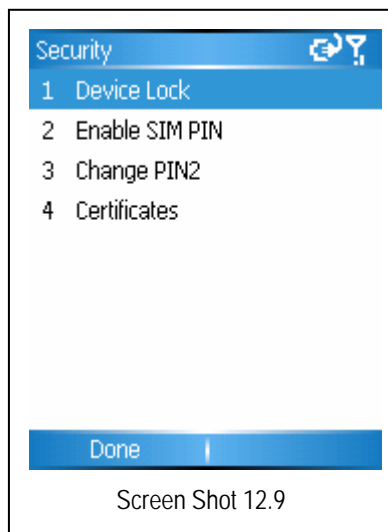
12.8.4 Advanced

From the [Internet connections](#) screen, select [Advanced](#). Here you are able to make advanced modifications on Internet connection options.

Note: Factory settings for this device should suffice for network connections. If you modify connection schemes, restore factory settings by selecting the [Reset](#) option.

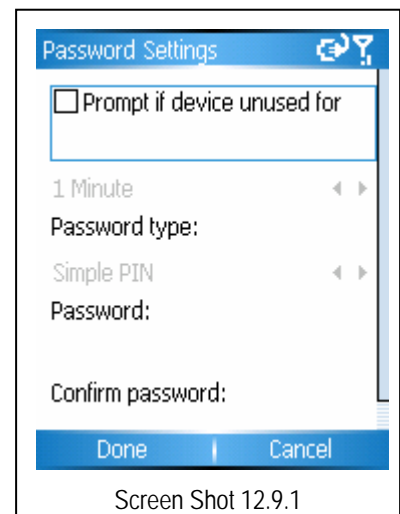


12.9 Security



12.9.1 Enable phone lock

The device has an optional phone locking function that engages a locking mechanism on the phone after the device sits idle for a period of time. A password will be required to use the phone again. Refer to screen shot 12.9.1 for [Password Settings](#).



12.9.2 Using SIM PIN

Your SIM card is provided with a PIN (personal identification number). To protect your SIM card from use by others without permission, select the [Enable SIM PIN](#) option. Once this feature is enabled, the PIN will be required every time the phone powers on. If the PIN is entered incorrectly 3 times consecutively, the SIM card will lock automatically and no access will be permitted to the SIM card data or any applications stored on the SIM card.

When locked, the SIM card can be unlocked only by the PUK.

If the PUK is entered incorrectly 7 times consecutively, the SIM card will be permanently locked. The PUK is always provided with the purchase of your SIM card. If you have lost your PUK, please contact your Internet Service Provider.

12.9.3 Changing PIN2

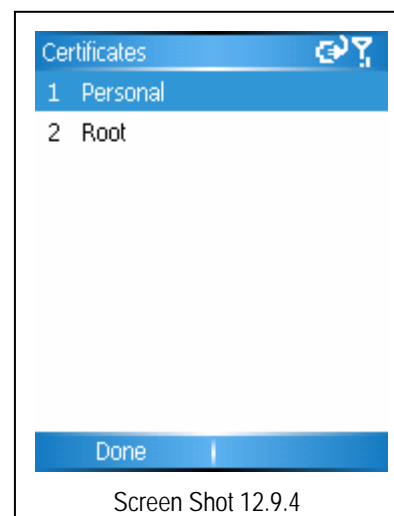
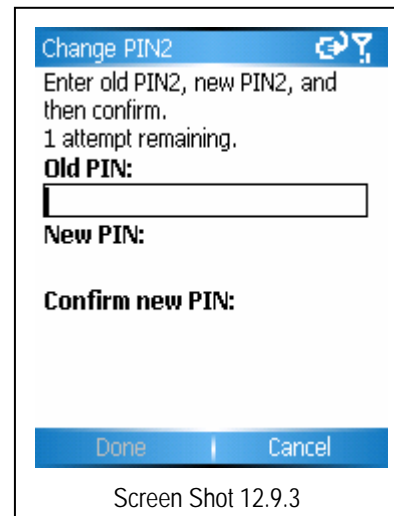
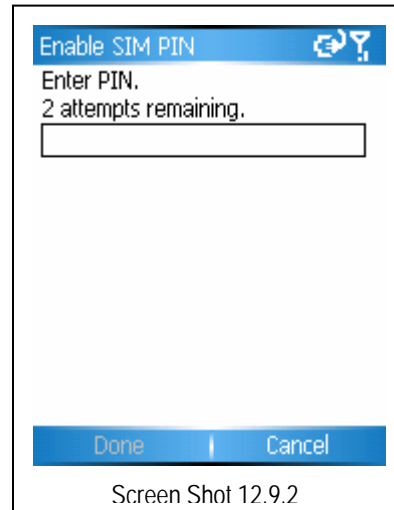
A secondary PIN feature is also available. Set the PIN2 as a series of numbers with 4-8 digits. A PUK2 code is not normally provided with the purchase of your SIM card. A PUK2 is required when you intend to change a locked PIN2. If an incorrect PUK2 has been entered 10 times, you will be permanently unable to use options on that require a PIN2.

12.9.4 Certificates

Your phone's certificates are necessary files that ensure normal performance of the installed programs. Do not delete the phone's certificates. Restoring factory settings will restore deleted factory certificates.

12.10 Removing programs

Programs that are no longer in use can be removed to free up space for the system. From the [Program](#) list, highlight the program to be removed and select [Delete](#) from the [Menu](#).



12.11 Power management

Battery life, backlight time out, and display time out can be viewed here.

12.12 Accessibility

This feature allows you to set system response time for multi-press, reminder volume and smart dial settings.

12.13 Regional settings

Regional settings allows you to change the language used by your phone. Languages currently available are U.S. English, Español, Français, or Deutsch. After changing the language settings and other settings within the **Regional settings** menu, you must power cycle the phone in order for changes to take effect.

Settings for the following can also be specified here: Language, Locale, Short Date style, Long Date style, and the format of Time, Positive numbers, Negative numbers, Positive Currency amounts, and Negative currency amounts.

12.14 Owner information

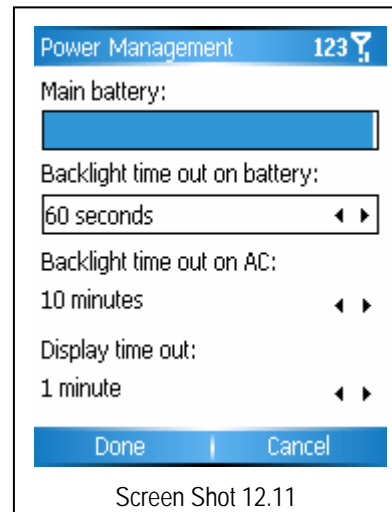
Add specific personal identification information in this menu.

12.15 About

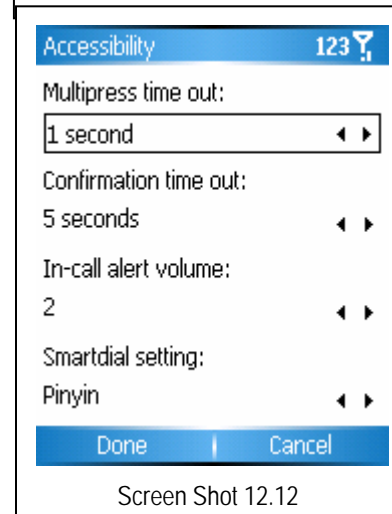
Although you are unable to edit from this screen, you are able to view the essential configuration and software information for your phone.

12.16 Error reporting

Error reporting (when enabled) enables an error report to be transmitted to Microsoft as an error occurs during any system process. This report helps Microsoft improve the system functionality. Error reporting is completely voluntary and private.



Screen Shot 12.11



Screen Shot 12.12



Screen Shot 12.13

12.17 Boot settings

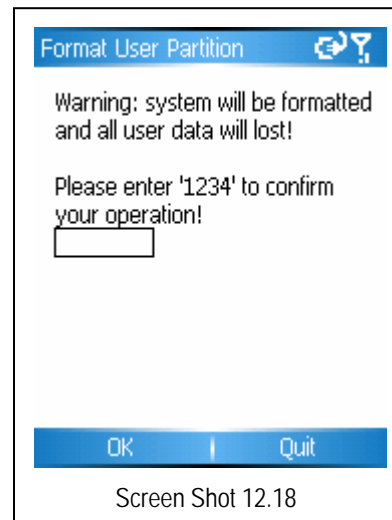
Enable/Disable the Power on/off music.

12.18 Format user partition

Enter "1234" in the blank then press **OK** to restore factory settings.

Note: Please use this function with care and backup all files before resetting.

Note: The manufacturer cannot be responsible for loss of information caused user format using this function.



Screen Shot 12.18

13. Games

13.1 Bubble Breaker

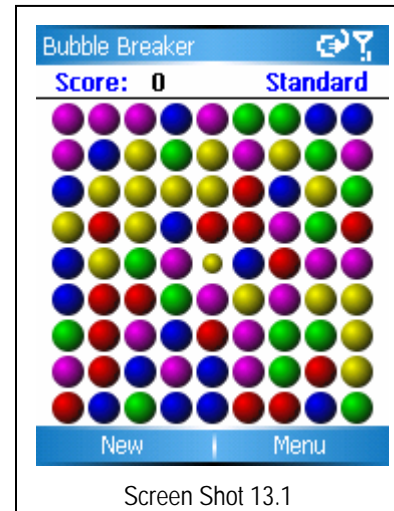
Overview of Bubble Breaker

Bubble Breaker is easy to learn, yet difficult to master. The objective is to align same color bubbles to form large blocks of bubbles before bursting them. The more bubbles you have in the block before they are burst, the greater number of points you will receive.

Start Bubble Breaker

To start Bubble Breaker, click [Start > Games > Bubble Breaker](#).

To burst a bubble, the bubble must be connected to other similar bubbles on the playing board. If you select a bubble that is connected, those connected bubbles will be highlighted and a new bubble will pop up, displaying that block's potential bubble points. Click your selection again to burst the bubbles.



Breaker Bonus

If you manage to leave fewer than five bubbles on the board, you will be rewarded with more points at the conclusion of the game.

Undo

Moves in Bubble Breaker can be undone. To [Undo](#) the last move you made, Select [Menu > Undo Move](#).

Set Bubble Breaker options

Bubble Breaker allows you to change your playing experience.

- Click [Menu > Options](#) to select from the following:
- [Play Sounds](#). Toggles games sounds on or off.
- [Guest Mode](#). Enables guests to play without affecting the statistics.

13.2 Solitaire

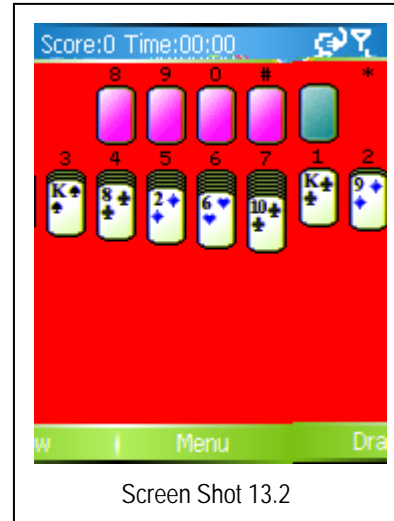
Play Solitaire

- To open [Solitaire](#), from the [Home](#) screen, click [Start > Games > Solitaire](#).
- To deal the cards, click [Menu > New Game](#).

Move cards

A number or character is displayed above each card stack.

1. On the keypad, press the number or character above the card you want to move, and then press the number or character above the stack to where you want to move the card.
 2. To move a card up to one of the four stacks in the right-hand corner of the screen, press the number above the card in the lower stack, and then press Navigation up.
- To undo a move, click [Menu > Undo](#).
 - Build the suit stacks at the top in ascending order, from Ace to King.
 - You win the game when all cards are in their correlating suit stacks.



Playing solitaire

1. Move any aces on the seven stacks to the four card spaces at the top of the screen, and then make any other available plays.
2. When you have made all available plays, click [Draw](#) to turn over cards.

Note: The top card that is face up on the deck is always available for play.

14. Voice notes

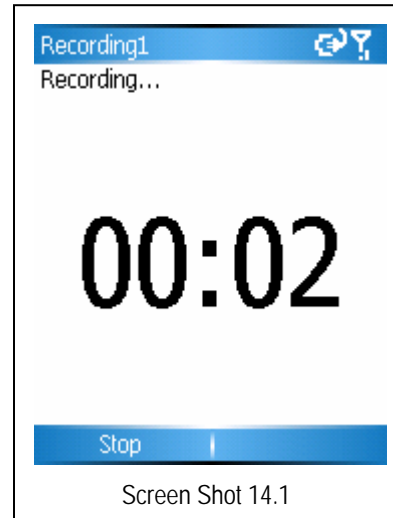
Your phone can be used to record voice memos or voice notes.

14.1 Recording a voice note

After entering **Voice note** feature, press the **LSK** (record) to start recording. You will press the **LSK** (stop) again to stop recording.

14.2 Playing voice note

Highlight the recording in **Voice note** you wish to be played. Press **OK** or select **Play** from the **Menu** to play this recording.



15. Pictures & Videos

Pictures stored in the phone or on the memory card can be viewed with your handset. You can select a picture as your phone's wallpaper from the **Home** screen. You can also send pictures and videos to other mobile phone users whose device supports this feature.

15.1 Pictures & Videos preview

After you enter **Pictures & Videos**, a **thumbnail** view of all stored pictures is presented.

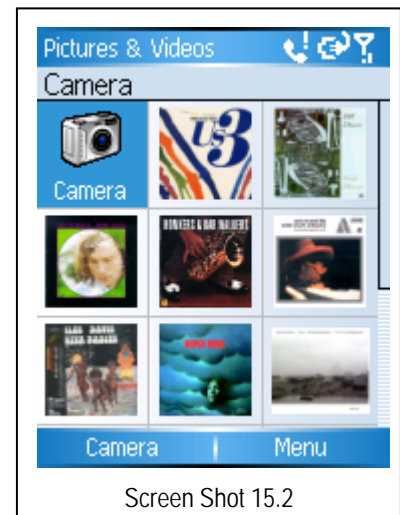
- 1 Press the **LSK** to view the picture currently highlighted or use your navigation keys to highlight a different picture.
- 2 On the **Preview** screen, use the navigation keys to preview previous/next picture in the rotation.

15.2 Functions in Pictures & Videos list

From the **thumbnail** view, press the **RSK** to activate the popup **Menu**.

From the popup **Menu**, you can perform the following operations:

- Send:** Send pictures to other devices by means of MSS or E-Mail.
- Beam:** Transfer pictures to other devices by means of infrared transmission.
- Save to Contact:** Set a picture as an icon representing a specified contact. The picture is displayed each time the Contact is called.
- Delete:** Delete a picture or pictures.
- Edit:** Edit a picture or pictures.
- Play Slide Show:** View all pictures as a slide show
- Folders:** View pictures stored in other folders on the phone.
- Options:** Select different views options of pictures stored on the phone.



15.3 Preview function

Select one picture from the list and press the **LSK** to preview it on the screen.

Now press the **LSK** to send this picture to other devices. If you press the **RSK** you can:

- Zoom:** Zoom in or out to view the picture more closely.
- Play slide show:** View all pictures as a slide show.
- Use as Home screen:** Set pictures as wallpaper on the Home screen.
- Beam Picture:** Send pictures to other devices by means of wireless infrared.
- Edit:** Edit pictures stored on the device.
- Save:** Save pictures.
- Properties:** View picture properties like file name, size, etc.
- Options:** Select different views options of pictures stored on the phone.

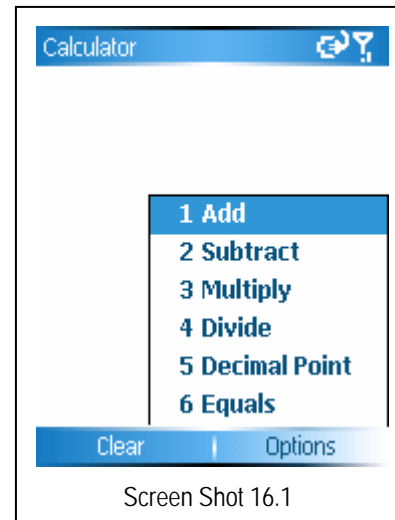


16. Accessories

16.1 Calculator

The [Calculator](#) feature allows simple arithmetic, including addition, subtraction, multiplication, and division.

From the [Calculator](#) screen, enter digits with the keypad, repeatedly press #, or move navigation keys to select the operators you desire. Press * to enter a decimal point. Press [Back](#) or the [LSK](#) (Clear) to clear the entry or result.



16.2 Download agent

The [Download Agent](#) allows easy access to the status of files being downloaded from a network.

16.3 IME_Setting

The [IME_Setting](#) allows alteration of various properties for input methods used on your phone.

16.4 Modem link

When your phone has been connected to a PC, this feature turns your phone into an external modem, enabling wireless net surfing on the PC.

16.4.1 Using Beam

Install infrared Modem driver: Select [IrCOMM](#) from [Connection](#) options in [Modem Link](#), and then press the [RSK](#) to activate it. Aim the infrared interface on you phone toward that of the PC. The Windows OS will automatically search for the proper driver to install.

After installation is finished, one new modem appears in "Phone and Modem options" on the [Control Panel](#), which indicates that the [IrModem](#) driver has been correctly installed.

Approach dialing to use infrared modem connection: Select [IrCOMM](#) from the [Connection](#) options in [Modem connection](#) and press the [RSK](#) to activate it. Aim the infrared interface on your phone to that of PC, and dial to connect to the Internet from the PC.

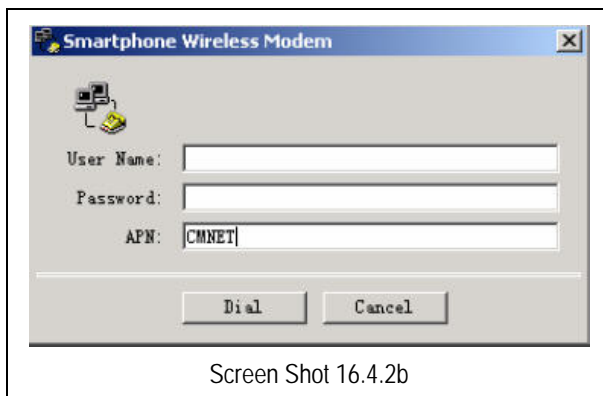
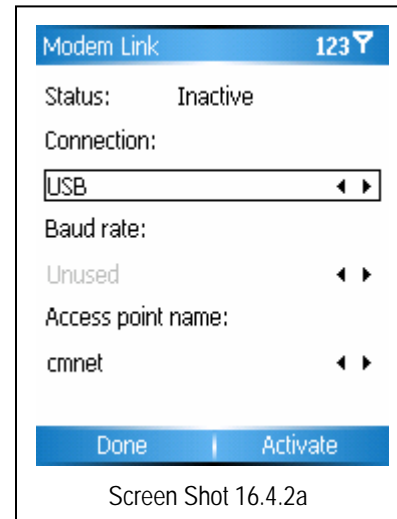
Note: Each time you dial, you will need to activate the Modem for it to connect normally.

16.4.2 Using USB connection

Install USB modem driver to PC: From the **Connection** screen, select **Modem Connection > USB** to activate the setting, then connect phone to PC with USB cable and the Windows OS will automatically search for the correct driver to install.

After installation is complete, one new modem appears in **Phone and Modem** options on **Control Panel**. This indicates that the USB Modem driver has been correctly installed.

Approach to dialing to use USB Modem connection: From the **Connection** screen, select **Modem Connection > USB**, then press the **RSK** to activate it. Connect the phone to PC with the USB cable, run USB Modem application, enter **CMNET** in **APN** and click **DIAL**. The PC will automatically connect to Internet.



17. Camera

17.1 Cautions in using Camera

- The camera included with your phone is produced and assembled with superior and high precision technologies. However, you should pay particular care when shooting pictures in dimly lit areas to avoid the amount of impurities (e.g., white lines, bright dots, dim dots, etc.).
- Fingerprints, debris or oil present on the lens may result in difficulties in focusing or obscurities in picture quality. Before taking pictures, clean the lens with a lens tissue for optimal results.
- Exposure to high temperatures may result in extremely poor quality picture output.
- Exposure to sunlight may change colors of the built-in color filter which may lead to poor color quality picture output.
- Excess motion while focusing may result in poor quality picture output.
- Do not aim directly into the sun or light source to avoid poor quality picture output.
- Use caution when taking pictures of copyrighted or restricted materials. Even though some pictures are purely for personal use, laws with regard to photo reproduction may protect entertainment events and similar scenarios. When in doubt, ask or look for posted signage.
- Use caution to protect others' privacy while shooting pictures with your phone.

17.2 Shooting Photos

Enter the **Camera** mode by pressing the **Camera** key or selecting **Camera** from the main **Menu**. Select **Capture** or press the **Camera** key once more to shoot the picture in the frame. The captured picture will be saved automatically by the system.

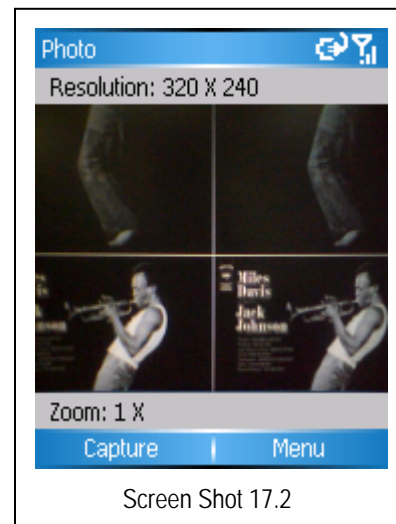
17.3 Shooting a video

This phone supports video recording. You need to change to its shooting module when you prepare to shoot a video.

- Press **RSK** on preview screen, Choose Video from Mode in Menu to switch to video mode. Now press OK key or shoot key to start shooting.
- Total length of video is determined by the capacity of memory.

17.4 Where photos and video files are stored

By default, all photos and video files taken are saved to the phone. However, to ensure that there is always enough space left for the system to run other applications, we suggest you save photos and videos to your T-FLASH card.



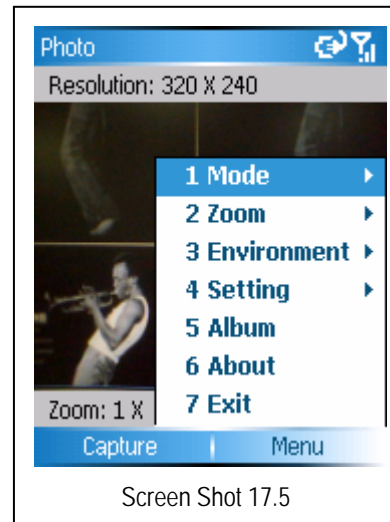
Perform the following to change the store position:

- First, be sure that a T-FLASH card has been inserted into the phone.
- In the preview screen, click **Menu > Settings > General**.
- In the **Store Position**, change to **Storage card**.

17.5 Menu

From the **Preview** screen, press the **RSK** to engage the popup menu where you can set various aspects of the camera options.

Mode:	Set camera mode.
Zoom:	Select different levels of lens focus.
Environment:	There are several different environments to choose from to obtain the best effect of the viewfinder.
Settings:	Set attributes and parameters.
Album:	View pictures and videos.
About:	View the camera version.
Exit:	Exit from camera feature.



18. Explorer

This feature enables you to manage system files. Please do not modify or delete original system files, otherwise, the system may not operate properly.

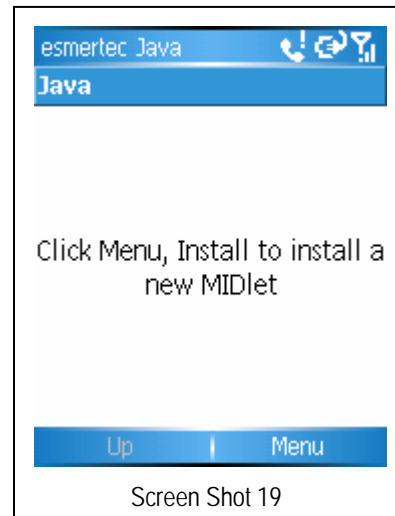
19. JAVA

This phone supports JAVA applications.
Select **Java** from the **Start** menu.

By default, no Java application has been pre-installed on your phone.
You need to install new Java MIDlets by downloading applications (with file extensions as **jar**, or **jad**) from the Internet.

After you have downloaded MIDlets from the Internet, follow the on-screen instructions to install.

All JAVA applications installed on this phone will be displayed on the **Java** screen. Highlight the desired **Java** program and press **OK** to launch the program.



20. Pocket MSN

20.1 MSN Messenger

MSN Messenger is an instant message-receiving/sending system developed by Microsoft®. With MSN Messenger, you can freely chat with a single user or a group of friends. You will, however, need to apply for an account at MSN, Hotmail, or Yahoo to use MSN Messenger.

20.1.1 Logging into MSN Messenger

Before you log in to use MSN Messenger, you must setup the MSN account and password.



On the [MSN Sign In](#) screen, press the [LSK](#) to sign in, then enter [Sign In](#) screen (see screen shot 20.1.1).

After entering your E-Mail address and password on this screen, press the [LSK](#) to log in.

20.1.2 Sending messages

After logging onto MSN, select a recipient to send messages from your [Contacts](#) list.

20.1.3 Ending a chat

Choose [End chat](#) from the [Menu](#) to end current chat session.

20.1.4 Invite a contact to participate in a chat

You can invite others to chat with you while a chat session is currently in progress. Select Invite from the [Menu](#), press [Select](#) once you have highlighted the contact to bring him into the current chat session.

20.1.5 Blocking or canceling block against a contact

Sometimes it is desired to block a certain contact on your list. This will disable him from viewing your online status or sending you an instant message.

From the [Contact](#) list, highlight the contact you want to block, then choose [Block](#) from the [Menu](#). Repeat these steps to block other contacts or select [Cancel block](#) to disable the blocking feature.

20.1.6 Deleting a contact

From the [Contact](#) list, highlight the contact you want to delete, and then select [Delete](#) from the [Menu](#) to delete the contact from the list.

20.1.7 Changing your status

To change your online status, highlight your ID from the [Contact](#) list and press [OK](#). A [Status](#) option list will appear where you can select the appropriate status and press [OK](#) to modify your status.

 **Note:** Your status can only be changed when you are logged in to Messenger.

20.1.8 Changing your ID

Highlight your ID in the [Contact](#) list, click [Menu > Options](#) to modify your sign-in name with another account.

20.1.9 Signing out

From the [Contact](#) list, click [Menu > Sign out](#). You will be prompted to confirm. Press [OK](#) to complete the operation.

20.2 Hotmail

Using Hotmail, you can create or check your online web mail. To edit or send E-Mail, please refer to related instructions for E-Mail in the mail system options.

20.3 MSN Mobile homepage

It will soon link to the homepage of MSN Mobile after entering this item.

21. Speed dial

Speed dialing is a convenient feature managed from this menu. To create a [Speed Dial](#) for your [Contact](#) list, please read [Sec 9.5 Creating speed dial to a contact](#).

Highlight the desired number from your [Contact](#) list and select [Run](#) from the [Menu](#) to dial.

22. Common problems and solutions

If you encountered problems while operating your device, the following troubleshooting tips may help resolve the issue. If the problem persists, please contact your dealer or service operator.

Common problems	Reasons	Solutions
Fails to connect to network using Internet Explorer	Network service operator does not provide such service, or you have not subscribed to the service.	Consult network operator for information about how to subscribe a service.
	Incorrect configuration of Internet Explorer	Refer to Section. Getting connected.
SIM card error	SIM card is warped or damaged.	Consult your network operator.
	SIM card is not properly installed.	Check SIM card. Change to a new one if necessary.
	Metal surface of SIM card is unclean.	Clean the metal surface with a clean cloth or tissue.
Poor signals	Using your phone in places that may result in a poor signal of your phone, like surroundings of high buildings, or in a basement where radio waves become unreachable.	Receive calls in places where a good signal is available.
	Using phone during the period of busy communication, which may results in a channel jam and inability of communicating.	Avoid being within such a situation or similar.
Fail to power on	Using an excessively low battery.	Charge it, or replace it with a new one.
Fail to make a call	Call barring service enabled.	Disable it in Settings > Phone
Fail to connect to network	SIM card invalid	Consult your network operator
	Out of GSM service area	Relocate your phone into service area of network operator.
	Poor signals	Relocate your phone to places with strong signals, then try again.
Fail to charge	The battery voltage in use is not in the range specified by charger.	Use batteries with proper voltage range.
	Using a non-standard charger	Use a charger designed for this type of phone.
	Improperly connected to the main power.	Check the connection in between.

23. Maintenance Guide

Should you experience problems using this phone, contact the dealer where it was purchased or refer to the repair center specified. If the phone needs repair, you may send it to the local repair center (see the certificate of three guarantees provided with the phone for specific repair network). If there is no local repair center specified, delivery your phone and copy of purchasing invoice to the dealer for mailing of EMS.

Your phone is a product of superior design and artisanship and should be treated with care. The following guidelines may help you maintain the warranty obligations with regard to the terms of Maintenance Clauses, which can extend the useful life of your device.

Keep the phone and all its parts and accessories away from children.

Keep the phone dry. Precipitation, humidity, and liquids may contain minerals that can corrode electronic circuits.

Do not use or store the phone in dusty areas as knock-down components may be damaged.

Do not store the phone in extreme temperatures. High temperatures can shorten the life of electronic devices, damage batteries and warp or melt certain plastics components. Cold temperatures may result in moisture forming inside the phone when temperatures rise, which may damage the electronic circuits.

Do not attempt to disassemble the phone's casing. Nonprofessional handling of the phone may cause damage and void the warranty.

Do not drop, knock or shake the phone to avoid damage to the internal circuitry.

Do not apply or clean the device with chemical products, detergents or scouring products.

Do not use paints on or in the phone. Blockage of sundries inside the knock-down components may affect the normal operation of the device.

The abovementioned guidelines are applicable to your phone, batteries, charger and accessories. If you experience difficulties with any of these components, contact the nearest qualified repair institution.